



# Speed Enforcement Evaluator

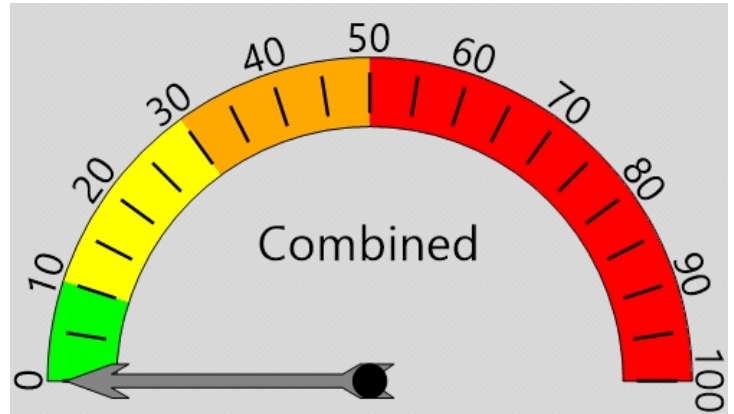
## Analysis Dates

Start: 10/8/2020  
End: 10/16/2020

## Total Percentage of Enforceable Violations

## Equipment Used

Posted Speed Limit 30 MPH  
Enforcement Tolerance 5 MPH  
Enforcement Limit Greater than 35 MPH



11.9

1st  
Percentile



21.9

Average  
Speed

30.9

99th  
Percentile



0%  
Enforceable  
Violations



Vehicle Totals - Combined

<= 15	<= 20	<= 25	<= 30	<= 35	<= 40	<= 45	<= 50	<= 55	<= 60	<= 65	<= 70	> 70
446	2542	6743	3248	312	20	2	2	1	0	0	0	0
85th Percentile: 25.9												

Vehicle Totals - Channel 1

<= 15	<= 20	<= 25	<= 30	<= 35	<= 40	<= 45	<= 50	<= 55	<= 60	<= 65	<= 70	> 70
193	1136	2571	874	49	3	1	1	0	0	0	0	0
85th Percentile: 24.9												

Vehicle Totals - Channel 2

<= 15	<= 20	<= 25	<= 30	<= 35	<= 40	<= 45	<= 50	<= 55	<= 60	<= 65	<= 70	> 70
253	1406	4172	2374	263	17	1	1	1	0	0	0	0
85th Percentile: 25.9												