



# Vinnin Square Residences

Marblehead Planning Board  
Presentation  
September 13, 2022







LEGGAT McCALL  
PROPERTIES, LLC

### PROP. MULTI FAMILY

299 SALEM STREET,  
TOWN OF SWAMPSCOTT, ESSEX COUNTY, MA

### RENDERING

SCALE: 1" = 30'  
DATE: 08/05/2022  
PROJECT #: M211002

### BOHLER

352 TURNPIKE ROAD  
SOUTHBOROUGH, MA 01772  
Phone: (508) 480-9900  
Fax: (508) 480-9080  
www.BohlerEngineering.com





LEGGAT McCALL  
PROPERTIES, LLC

**PROP. MULTI FAMILY**

299 SALEM STREET,  
TOWN OF SWAMPSCOTT, ESSEX COUNTY, MA

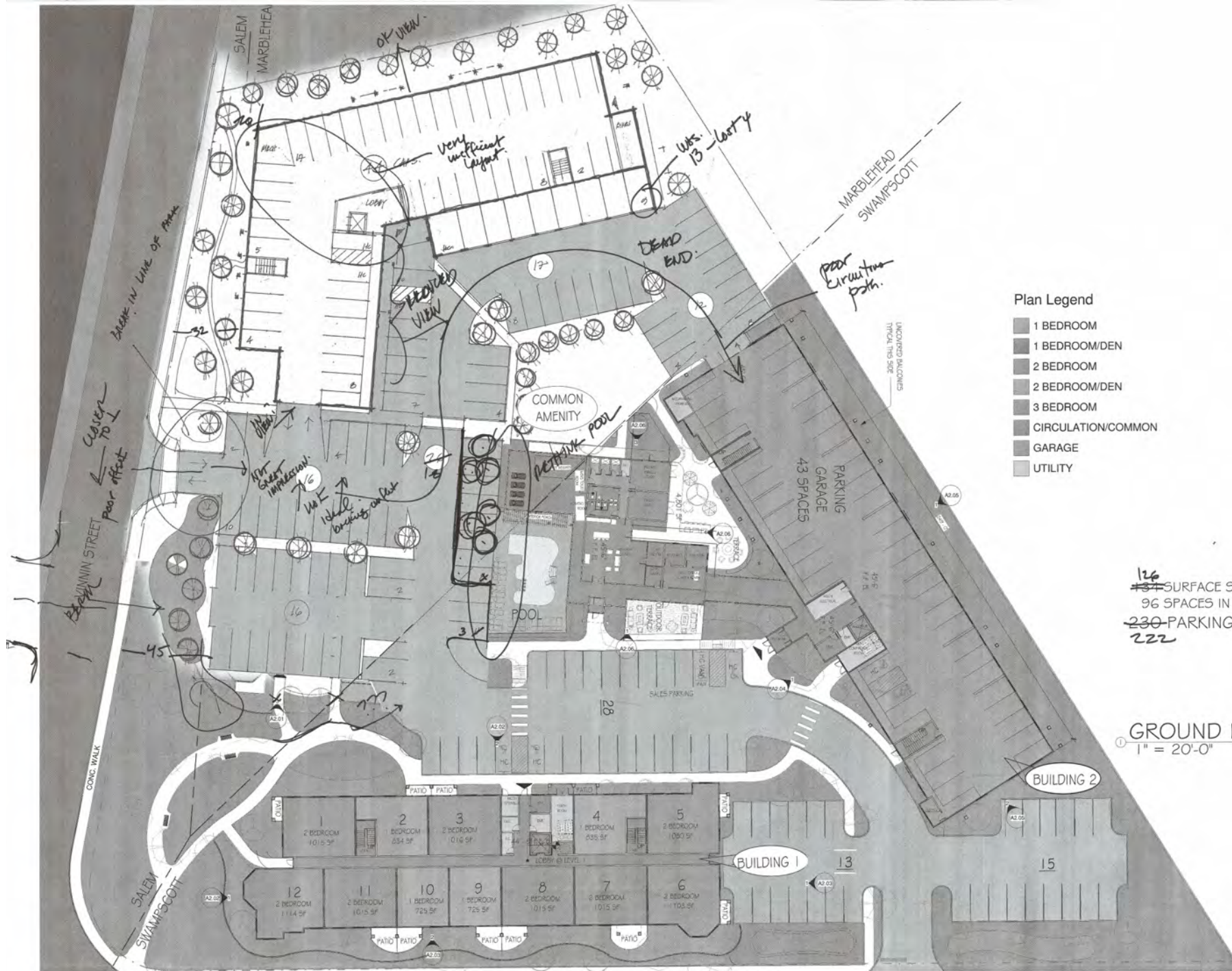
**GLOVER RESIDENCES AT VINNIN SQUARE**

SCALE: 1" = 30'  
DATE: 08/05/2022  
PROJECT #: M211902

**BOHLER //**

352 TURNPIKE ROAD  
SOUTHBOROUGH, MA 01772  
Phone: (508) 480-9900  
Fax: (508) 480-9090  
www.BohlerEngineering.com





- Plan Legend**
- 1 BEDROOM
  - 1 BEDROOM/DEN
  - 2 BEDROOM
  - 2 BEDROOM/DEN
  - 3 BEDROOM
  - CIRCULATION/COMMON
  - GARAGE
  - UTILITY

~~126~~ SURFACE SPACES  
 96 SPACES IN GARAGE  
~~230~~ PARKING SPACES  
 222

**GROUND FLOOR PLAN**  
 1" = 20'-0"



Revisions Date Description	Planning Board Filing - Swampscott Determination	July 18, 2022 Checked By
<b>GROUND FLOOR PLAN</b>		
Board of Appeals/ Planning Board Filing		
Scale: As indicated Drawn By: Date: July 18, 2022 Project #		
<b>Leggat McCall Properties, LLC</b> 299 Salem St. Town of Swampscott; 200-204 Tudorco St. Town of Marblehead; 20 Vinnin Sq. City of Salem Essex County, MA		
SV DESIGN 128 Dodge Street Beverly, Massachusetts 01915 198.907.2145 www.svdsgn.com		
<b>DESIGN</b>		
<b>GROUND FLOOR PLAN</b>		
<b>A1.01</b>		



① ORIGINAL DESIGN  
1/4" = 1'-0"



② OPTION 1 - DUTCH HIP  
1/4" = 1'-0"



③ OPTION 2 - HIP ROOF  
1/4" = 1'-0"





INITIAL DESIGN





INITIAL DESIGN





INITIAL DESIGN





OPTION 1: DUTCH HIP ROOF





OPTION 1: DUTCH HIP ROOF





OPTION 1: DUTCH HIP ROOF





OPTION 2: HIP ROOF





OPTION 2: HIP ROOF





OPTION 2: HIP ROOF



