



TOWN OF MARBLEHEAD

Recreation & Parks Department

Recreation and Parks Meeting Minutes



04/23/13

NOTE: The following is a **summary** of matters submitted at a meeting of the Recreation and Parks Commission in accordance with M.G.L Chapter 39 and the Massachusetts Open Meeting Laws. Meetings are often recorded and tapes used as an aid.

- 1) **Call to order:** Derek Norcross called the 04/23/13 meeting to order at 7:05 PM.
- 2) **Attendance:**
 - a) Present (constituting a quorum): Derek, Linda, & Bob.
 - b) Absent: Chip & Jerry.
- 3) **Minutes of last meetings:** **Motion** made and seconded to approve the minutes of the 04/03/13 meeting; all in favor.
- 4) **Appearances:** Barbara Paik appeared to discuss her (attached) request for a tree at Seaside. After discussion, Board agreed to take her suggestion under advisement. Brendan will contact the Tree Warden to research the best type of tree selections for that location and make a recommendation to the Board at the next meeting with the goal of getting a tree planted in May.
- 5) **Reports (see attached). Addendum:**
 - a) Brendan's:
 - i) Working with the MHS Senior class advisor regarding Carnival details.
 - ii) Seasonal maintenance staff appointments:
 - (1) **Motion** made and seconded to approve the 2 returning applicants as listed in Brendan's report; all in favor.
 - (2) **Motion** made and seconded to approve the 3 new applicants as listed in Brendan's report; all in favor.
 - (3) **Motion** made and seconded to approve Todd Delisle and Hunter Graves for the Beach Maintenance positions; all in favor.
 - b) Jim's: Jim absent; Brendan read report.
 - i) **Motion** made and seconded to approve the 3 returning applicants for the summer playground program staff as listed in Jim's report; all in favor.
 - ii) **Motion** made and seconded to approve the 4 new applicants for the summer playground program staff as listed in Jim's report; all in favor.
 - iii) **Motion** made and seconded to approve the 2 returning applicants for the sailing program staff as listed in Jim's report; all in favor.
 - iv) **Motion** made and seconded to approve the 2 new applicants for the sailing program staff as listed in Jim's report; all in favor.
- 6) **Old Business: See Brendan's report. Addendum:**
 - a) Memorial Park: Discussion of Shattuck request, flag pole lighting, and bids for grounds landscaping maintenance. After discussion, **Motion** made and seconded to accept the bid from "Plants and Pleasantrees"; all in favor. Brendan will get the contract drawn up.
 - b) Trash collection: Brendan informed the Board that Reggie is switching to the summer schedule for weekend trash collection. After discussion, no actions taken.

MARBLEHEAD COMMUNITY CENTER

10 HUMPHREY STREET

MARBLEHEAD, MASSACHUSETTS 01945-1906

www.marblehead.org

TELEPHONE: (781) 631-3350

FAX: (781) 639-3420

7) **New Business:**

- a) Discussion of pending State legislation regarding personal floatation devices for aquatic activities at natural bodies of water. Brendan will keep the Board informed of any developments.
- b) **Correspondence (attached):**
 - i) The following attached permit applications were moved and approved pending receipt of any required fees and/or insurance:
 - (1) MHS Senior Picnic: Fees waived and proof of insurance required; time: 6:30 to 8:30 (AM & PM).
 - (2) Jr. Aid Society Walk: Fees waived and proof of insurance required; time: 9 AM to 2 PM.
 - (3) Marjorie Dixey Bud Orme Rink use: Pending fees and proof of insurance.
 - ii) Memorial tree at Crocker Park request: Type of tree and location discussed. After discussion, Brendan will research what type of tree would be acceptable.
 - iii) The following items were presented for informational purposes with no actions required: 1 E-mail from Linda, 1 Legal Notice, and 1 Notice of License Application.

8) **Timekeeping**: Meeting Adjourned: 8:30 PM. The next meeting date is to be determined.

Attachments: Meeting Notice and Agenda; Paik letter; Reports with attachments (2); Permit applications (3); Tree request (1); Informational items (3).



DATE POSTED:

Town Clerk Use Only

MEETING NOTICE & AGENDA

POSTED IN ACCORDANCE WITH THE PROVISIONS OF MGL 30A §§18-25

Recreation and Parks Commission

Name of Board/Committee

Address of Meeting: Community Center, 10 Humphrey Street Room: Conference Room

Tuesday
Day of week

April
Month

23
Date

2013
Year

7:00 PM
Time

Agenda or Topics to be discussed listed below (That the chair reasonably anticipates will be discussed)

✓ Approval of minutes from April 3, 2013 meeting

Superintendent of Recreation and Parks and Recreation Supervisor reports

✓ Appearance: 7:15 p.m. - Barb Paik - Seaside Park abutter

1. Memorial Park
2. Spring field updates

Next Meeting: TBD

THIS AGENDA IS SUBJECT TO CHANGE

Chairperson Chip Osborne

Posted by: Brendan Egan

Date: 4/18/13

Date: April 18, 2013

To: Recreation and Parks Commission

From: Barbara Paik, 12 Wyman Road

Re: Replacing fallen willow at Seaside Park with a maple

Our house backs up to Seaside Park next to the site of the willow that fell during hurricane Sandy last year, and near the other willow that went down in a storm a few years ago. In the 5 years we've lived here, we've enjoyed the park and its trees, especially since our yard is too small to grow any sizeable trees of our own. However, every nor-easter has been a bit of a nail-biter for us, as you can imagine. With that fresh in my memory, I'm asking you to consider replacing the recently downed willow with an "October Glory" red maple (see attached info sheet). It seems to me that the October Glory has all the advantages of the willow, and is better in some ways.

Like the willow, the October glory red maple is:

- a fast growing tree
- similar in potential mature height
- similar or longer in potential lifespan, and
- similar in its capacity for drinking up groundwater.

The October Glory red maple seems to be better than the willow in these ways:

- Less breakage due to stronger wood
- Less likely to be blown over in a storm due to less dense crown and long taproot, versus the willow's shallower root system
- less messy to pick up after, and
- I think they look prettier, especially in autumn. An October Glory would fit in nicely with the other maples that are already growing in that corner of the park.

Now, I am not a tree expert. I found out these things using Google searches, and I know you can't believe everything you see on the internet. Especially that part about maples being just as good as similar sized willows at sucking up groundwater, that surprised me. So I emailed Prof Gilbert, who is one of the creators of the tree database where I got the "October Glory" info. I also called Northeast Nursery in Peabody and talked to one of their tree guys. Neither of them thought that the capacity to drink up groundwater should be a big factor in choosing between a willow or an October Glory red maple.

So that is my case. Thank you all for your time and consideration in hearing my request.

Sincerely,

Barbara Paik
12 Wyman Road
781-639-7918

<http://lyra.ifas.ufl.edu/NorthernTrees/>

This web site is designed to help guide you through the process of tree selection, and provide a list of possible trees for your project in the northeast United States, hardiness zones 2 - 7 ([Click here if you live in zones 8 - 11](#)). It is also designed to provide extensive cultural and maintenance information, and many photographs. Several tools listed on the left side of this screen are available to you now, others are still under development. This information was assembled through a grant from the USDA Forest Service Northeast Region in cooperation with Rutgers University and University of Florida. The principle authors of this system include Dr's. Ed Gilman and Howard Beck, professors at University of Florida, and Dr. Jason Grabosky at Rutgers. Robin Morgan at the USDA Forest Service was instrumental in executing the agreements that lead to completion of this project.

Acer rubrum 'October Glory': 'October Glory' Red Maple

http://hort.ufl.edu/database/documents/pdf/tree_fact_sheets/acerubf.pdf

Introduction

This cultivar of Red Maple has an oval to rounded shape and is a fast grower with strong wood, reaching a height of 40 to 50 feet. It and 'Red Sunset' are the most popular Red Maples in cultivation probably due to their dependable fall color and vigorous growth. Unless irrigated or on a wet site, it is best used north of USDA hardiness zone 9. Trees are often seen shorter in the southern part of its range unless growing next to a stream or on a wet site. This tree is much preferred over Red Maple, Silver Maple or Boxelder when a fast growing maple is needed. The newly emerging leaves and red flowers and fruits signal that spring has come. They appear in December and January in Florida, later in the northern part of its range. The seeds of Red Maple are quite popular with squirrels and birds. This tree is sometimes confused with red-leaved cultivars of Norway Maple.

General Information

Scientific name: *Acer rubrum*

Pronunciation: AY-ser ROO-brum

Common name(s): 'October Glory' Red Maple

Family: *Aceraceae*

USDA hardiness zones: 5A through 8B (Fig. 2)

Origin: native to North America

Invasive potential: little invasive potential

Uses: reclamation; specimen; Bonsai; highway median; screen; shade; street without sidewalk; deck or patio; tree lawn 4-6 feet wide; tree lawn > 6 ft wide

Description

Height: 40 to 50 feet

Spread: 25 to 35 feet

Crown uniformity: symmetrical

Crown shape: oval, round

Crown density: moderate

Growth rate: fast

Texture: medium

Foliage

Leaf arrangement: opposite/subopposite (Fig. 3)

Leaf type: simple

Leaf margin: incised, serrate, lobed

Leaf shape: ovate

Leaf venation: palmate

Leaf type and persistence: deciduous

Leaf blade length: 2 to 4 inches

Leaf color: green

Fall color: yellow, orange, red

Fall characteristic: showy

Flower

Flower color: red

Flower characteristics: showy

Fruit

Fruit shape: elongated

Fruit length: 1 to 3 inches

Fruit covering: dry or hard

Fruit color: red

Fruit characteristics: attracts squirrels/mammals; showy; fruit/leaves not a litter problem

Trunk and Branches

Trunk/bark/branches: branches droop; not showy; typically one trunk; thorns

Pruning requirement: needed for strong structure

Breakage: resistant

Current year twig color: gray, reddish

Current year twig thickness: medium

Culture

Light requirement: full sun, partial sun or partial shade

Soil tolerances: sand; loam; clay; acidic; well-drained; extended flooding

Wood specific gravity: 0.54

Drought tolerance: moderate

Aerosol salt tolerance: low

Other

Roots: can form large surface roots

Winter interest: yes

Outstanding tree: yes

Ozone sensitivity: unknown

Verticillium wilt susceptibility: susceptible

Pest resistance: resistant to pests/diseases

Use and Management

The outstanding ornamental characteristic of 'October Glory' is bright red to orange fall color (sometimes on the same tree) lasting several weeks. It puts on one of the most brilliant displays of any tree late in the fall.

The tree makes the best growth in wet places and has no other particular soil preference except chlorosis may develop on alkaline soil where it also grows poorly. It is well-suited as a street tree in northern and mid-south climates in residential and other suburban areas but the bark is thin and easily damaged by mowers. Irrigation is often needed to support street tree plantings in well-drained soil in the south. Roots can raise sidewalks as Silver Maples can but they have a less aggressive root system and so they make a good street tree. Surface roots beneath the canopy can make mowing difficult.

Red Maple is easily transplanted and usually develops surface roots in soil ranging from well-drained sand to clay. It is not especially drought-tolerant, particularly in the southern part of the range, but selected individual trees can be found growing on dry sites. This trait shows the wide range of genetic diversity in the species. Branches often grow upright through the crown forming poor attachments to the trunk. These should be removed in the nursery or after planting in the landscape to help prevent branch failure in older trees during storms. Select branches with a wide angle from the trunk and prevent branches from growing larger than half the diameter of the trunk.

A number of other cultivars are listed. Due to graft-incompatibility problems which cause the tree to break apart, preference should be given to cultivars produced on their own roots. In the northern and southern end of the range, choose cultivars with regional adaptation. The cultivars are: 'Armstrong' - upright growth habit, almost columnar, somewhat prone to splitting branches due to tight crotches, 50 feet tall; 'Autumn Flame' - 45 feet tall, round, above average fall color; 'Bowhall' - upright growth habit, branches form embedded bark, graft incompatibility on grafted trees; 'Gerling' - densely branched, broadly pyramidal, about 35 feet tall when mature; 'Red Sunset' - above average orange to red fall color, does well in the south in USDA hardiness zone 8, probably the best cultivar for the deep south, oval, 50 feet tall; 'Scanlon' - upright growth habit; 'Schlesinger' - good fall color, rapid growth rate; 'Tilford' - globe-shaped crown. Variety *drummondii* is well-suited for USDA hardiness zone 8.

Pests

Aphids infest maples, usually Norway Maple, and may be numerous at times. High populations can cause leaf drop. Another sign of heavy aphid infestation is honey dew on lower leaves and objects beneath the tree. Aphids are controlled by spraying or they may be left alone. If not sprayed, predatory insects will bring the aphid population under control.

Scales are an occasional problem on maples. Perhaps the most common is cottony maple scale. The insect forms a cottony mass on the lower sides of branches. Scales are usually controlled with horticultural oil sprays. Scales may also be controlled with well-timed sprays to kill the crawlers.

If borers become a problem it is an indication the tree is not growing well. Controlling borers involves keeping trees healthy. Chemical controls of existing infestations are more difficult. Proper control involves identification of the borer infesting the tree then applying insecticides at the proper time.

Diseases

Girdling roots grow around the base of the trunk rather than growing away from it. As both root and trunk increase in size, the root chokes the trunk. Girdling roots are detected by examining the base of the trunk. The lack of trunk flare at ground level is a symptom. The portion of the trunk above a girdling root does not grow as rapidly as the rest so may be slightly depressed. The offending root may be on the surface or may be just below the sod. The tree crown shows premature fall coloration and death of parts of the tree in more serious cases. If large portions of the tree have died it may not be worth saving. Girdling roots are functional roots so when removed a portion of the tree may die. When the girdling root is large the treatment is as harmful as the problem. After root removal, follow-up treatment includes watering during dry weather. The best treatment for girdling roots is prevention by removing or cutting circling roots at planting or as soon as they are detected on young trees.

Scorch may occur during periods of high temperatures accompanied by wind. Trees with diseased or inadequate root systems will also show scorching. When trees do not get enough water they scorch. Scorch symptoms are light brown or tan dead areas between leaf veins. The symptoms are on all parts of the tree or only on the side exposed to sun and wind. Scorching due to dry soil may be overcome by watering. If scorching is due to an inadequate or diseased root system, watering may have no effect.

Nutrient deficiency symptoms are yellow or yellowish-green leaves with darker green veins. The most commonly deficient nutrient on maple is manganese. Implanting capsules containing a manganese source in the trunk will alleviate the symptoms. Test soil samples to determine if the soil pH is too high for best manganese availability. Plants exposed to weed killers may also show similar symptoms.

Tar spot and a variety of leaf spots cause some concern among homeowners but are rarely serious enough for control.

Recreation Commission Meeting

April 23, 2013

Superintendent's Report

Devereux Beach

The Highway Department has almost finished clearing the resident lot and the floats should be removed by the beginning of next week. The sidewalk in front of the pavilion has been repaved and the curbing in front of the pavilion and in the resident lot has been repaired.

I have been working with Town Counsel to develop an RFQ for the Devereux Beach Caretaker / Hauler position. Becky Curran is currently going over the RFQ and we expect to put it out after Town Meeting.

Athletic Fields / Parks

The high school sports season is in full swing and the fields are in good shape. We will be concentrating on the Gatchell fields this week, in preparation for opening weekend.

The staff took advantage of the school vacation week and cleaned up the front areas of some of the schools. We will turn our attention the Veterans school next week to prepare it for Town Meeting. We will also begin to brew and apply the spring round of fertilizer the end of this week.

Most of the bathrooms should be opened this week and Reggie will be returning to his summer hours beginning this weekend. He will now be working Wednesday through Sunday and will be off Monday and Tuesday.

Seasonal Appointments

I am submitting the following candidates for approval: Matthew Cashman, Sean Gibbons, Christopher Donahue, Cale Weston and John "Jake" Morris.

Evening Supervisor

We have been working on a position description for the part time person who works in our office at night and on the weekends. I don't think a description has ever been completed and would like to have your thoughts before sending it to the Compensation Committee for their approval. Please take a minute to read the description and give us your thoughts.

Memorial Park

I contacted three local landscapers about taking care of the planting beds at Memorial Park and received the following quotes: Cuzner Landscaping \$2,795.00, C.J. Archbold \$1,792.00 and Plants and Pleasantrees \$1,532.00.

New Business

- Three MHS students are doing their senior project with our department. They will be helping out with landscaping, clean ups and painting projects on our properties.
- Town Meeting is Monday, May 6, 2013 at 7:45 p.m.
- Rec Trac registration software has been upgraded to the most recent version

Old Business

- Financial Assistance – We have completed the application for financial assistance and will ask the applicants for a copy of the Marblehead School Department's letter to verify lunch program participation.

- Lynne Breed was excited to hear the commission was receptive to her ideas for Chandler Hovey. She is working on her proposal and I would like to invite her to our meeting in May.
- Paul Petersiel will be returning to operate Lime Rickey's again this season.

Old Business - cont

- Still waiting to hear back from MHS softball coaches on availability for site walk.

Next Meeting: May 6, 2013 – Town Meeting
May ?, 2013

Recreation and Parks Department Evening Supervisor

Summary:

Responsible for assisting the Administrative staff with tasks that could include, but are not limited to data entry, processing program registrations, answering phones, assisting customers, filing, shredding, copying, setup / breakdown of meeting rooms and gym when needed, and relay pertinent information to Administrative staff.

Duties and Responsibilities:

- Upon arrival check daily facility schedule, mailbox and meet with administrative staff as needed for program and facility updates
- Accept and process registration forms, permits and other applications
- Input registration forms into RecTrac, receipt, and file registration forms
- Phones should be answered: "Good Morning / Afternoon / Evening Marblehead Recreation and Parks Department"
- Assist residents / customers with accurate and appropriate department information
- Assist building users with correct information pertaining to their scheduled event and direct them to their assigned room
- Greet drop-in program participants at the counter and make sure they sign in and pay for the program. Cross reference the sign in sheet with the number of participants in the program and make sure numbers are correct
- Monitor building at all times and ensure all unoccupied rooms are secured, windows and doors are locked and lights turned off
- Only Marblehead Town Employees are permitted to be in the office
- Keep all work areas clean of debris

- Use of outside laptops, ipads, tablets, ect. are prohibited during work hours.
- Walk through building, beginning at the back, and secure all doors, windows and turn off lights at the end of shift.
- Place phone to answer mode, turn off video monitor, lights and automatic doors and alarm the building before leaving for the evening.
- Inform Administrative Staff of any problems, issues or incidents that occur during your shift.
- Performs other duties of similar nature and complexity as directed.

Jim Sullivan
Recreation Supervisor, Town of Marblehead
Tuesday, April 23rd

Recreation Supervisor Report

Programming Updates

- Summer Programming Guide being dropped off at schools tomorrow
- Tball- Starts this week, currently have 105 participants, last year 30.
- Summer Playground program is doing well. We currently have an average of 32 participants in each session.
- Second Session of Karate has 16 participants.
- Final spring session of Multi Sports has begun, total of 28 enrolled.

Summer Staffing

- Summer Playground Program
Recommending the board hires the following Playground Staff.
Jackie Barthelmes – Playground Director
Mark Imber – Sports & Games Specialty Counselor
Brittany Woodfin – Crafts & Nature Specialty Counselor
Counselors: Tatum Pederson, Maise Miller, Cassandra Rodgers, Colton Dana
(Looking to hire two more counselors in the upcoming weeks)
- Sailing Staff
Recommending the board hires the following Sailing Staff
Sailing Director: Wade Cammett
Sailing Counselors: Andrew Reilly, Oliver Gregory, Alexa Weislein
- Lifeguards
Conducting final Interviews this week.

Other

-Stramski Intergenerational Garden planting beds are on location and will be leveled out by Parks Department this week and into next week. Compost will be delivered and plantings will begin right around Memorial Day.

Town of Marblehead Recreation & Parks Department

Application for park permit

APPLICATION date: 4/23/13		APPLICANT (name of person paying for permit): Class of 2013 (Patrice Clough)	
INSURANCE REQUIREMENT FOR ALL WEDDINGS & LARGE EVENTS: (PLEASE CONTACT YOUR INSURANCE PROVIDER OR RENTAL COMPANY FOR ASSISTANCE)			
* IMPORTANT: A copy of a 1 million occurrence / 3 million aggregate insurance certificate naming the Town of Marblehead as an additional insured is REQUIRED to be provided with the request at the time of application.			
EVENT Day & Date: Wednesday June 5 Rain date June 6th		TIME OF EVENT (begin & end up to 3 hours; INCLUDES set up & clean up): 6:00 PM	
EVENT DESCRIPTION & expected attendance (use another page if needed): Sunrise / sunset picnic			
FACILITY REQUESTED (NOTE: Any parking fees are NOT included in the permit fee): Stramski Way			

Available Facilities:	Devereux beach - barbeque pavilion (2 grills in season)	Devereux beach - Garfield Pavilion (2 grills in season)	Gerry Playground (on Stramski Way) (2 grills in season)	Wedding ceremonies: Chandler Hovey, Crocker Park, or Castle Rock	Other
Residents security deposit:	\$25.00	Due at time of application		\$100.00 fee; Insurance required with ALL applications (see above); No security deposit required	Fees based on request (*see note); please describe on another page
Resident fee:	\$25.00	Due upon approval			
Non - residents security deposit:	\$50.00	Due at time of application			
Non - resident fee:	\$50.00	Due upon approval			
Catered event (Clambake, etc.)	\$2 per person; minimum \$100.00 - \$50 Security Deposit				

PAYMENT: Please submit 2 separate checks made out to "The Town of Marblehead" for the security deposit and fee. The security deposit check will be destroyed once the area is checked to ensure all trash was removed from the property.

APPROVAL: Applications must be made during regular business hours. Standard applications take 1 - 3 business days to approve. Only 1 standard permit for up to 3 hours of use allowed per day per applicant.


* Note: special requests determined by the Board at their next meeting, including fee amounts and any restrictions.


CANCELLATIONS / REFUNDS: requests must be in writing at least 5 business days before event (sorry, no "rain out" refunds).

RESTRICTIONS: Open fires (bonfires) and alcoholic beverages are prohibited on property under the jurisdiction of the Recreation & Parks Department (Code of the Town of Marblehead § 236-1.)

It is expressly understood and agreed that the policies of the Recreation & Parks Commission as described above are to be strictly complied with, and that the undersigned hereby assumes full responsibility for any damages to or loss of Town property in consequence of such use of the accommodations described above, and engages to make the same good without expense to the Town, and the undersigned further agrees to pay promptly such charges as may be made for the accommodations requested.

Request fee waiver(s) due to hardship? (waivers determined at next Board meeting)		YES / NO
OFFICE USE:		
Park detail required? (see detail sheet)	Police detail needed? (631-1212)	Insurance required (wedding, large event)?
YES / NO	YES / NO	YES / NO
(\$125 per unit)	\$	\$
Detail fee	Usage fee	Other fee
Dates paid and check number(s)		


 Signature of applicant


 Name (Please print clearly)

24 Humphrey St. Marblehead MA
 Address

Clough.patrice@marbleheadschools.org
 Telephone

Approved by:

Superintendent, Recreation & Parks Department

Date approved

Town of Marblehead Recreation & Parks Department

Application for park permit

APPLICATION date: 4/8/13		APPLICANT (name of person paying for permit): AUDREY V de ROSA	
INSURANCE REQUIREMENT FOR ALL WEDDINGS & LARGE EVENTS: (PLEASE CONTACT YOUR INSURANCE PROVIDER OR RENTAL COMPANY FOR ASSISTANCE)			
* IMPORTANT: A copy of a 1 million occurrence / 3 million aggregate insurance certificate <u>naming the Town of Marblehead as an additional insured</u> is REQUIRED to be provided with the request <u>at the time of application</u> .			
EVENT Day & Date: 5/11/13 SATURDAY		TIME OF EVENT (begin & end up to 3 hours; INCLUDES set up & clean up):	
EVENT DESCRIPTION & expected attendance (use another page if needed): Annual Junior Aid Society BTB 5k Run/Walk ≈ 500			
FACILITY REQUESTED (NOTE: Any parking fees are NOT included in the permit fee): Devereux beach parking lots			
Available Facilities:	Devereux beach - barbeque pavilion (2 grills in season)	Devereux beach - Garfield Pavilion (2 grills in season)	Gerry Playground (on Stramski Way) (2 grills in season)
Residents security deposit:	\$25.00	Due at time of application	
Resident fee:	\$25.00	Due upon approval	
Non - residents security deposit:	\$50.00	Due at time of application	
Non - resident fee:	\$50.00	Due upon approval	
Catered event (Clambake, etc.)	\$2 per person; minimum \$100.00 - \$50 Security Deposit		
		Wedding ceremonies: Chandler Hovey, Crocker Park, or Castle Rock	
		\$100.00 fee; Insurance required with ALL applications (see above); No security deposit required	
		Fees based on request (*see note); please describe on another page	
PAYMENT: Please submit 2 separate checks made out to "The Town of Marblehead" for the security deposit and fee. The security deposit check will be destroyed once the area is checked to ensure all trash was removed from the property.			
APPROVAL: Applications must be made during regular business hours. Standard applications take 1 - 3 business days to approve. Only 1 standard permit for up to 3 hours of use allowed per day per applicant.			
* Note: special requests determined by the Board at their next meeting, including fee amounts and any restrictions.			
CANCELLATIONS / REFUNDS: requests must be in writing at least 5 business days before event (sorry, no "rain out" refunds).			
RESTRICTIONS: Open fires (bonfires) and alcoholic beverages are <u>prohibited</u> on property under the jurisdiction of the Recreation & Parks Department (Code of the Town of Marblehead § 236-1.)			
It is expressly understood and agreed that the policies of the Recreation & Parks Commission as described above are to be strictly complied with, and that the undersigned hereby assumes full responsibility for any damages to or loss of Town property in consequence of such use of the accommodations described above, and engages to make the same good without expense to the Town, and the undersigned further agrees to pay promptly such charges as may be made for the accommodations requested.			

Request fee waiver(s) due to <u>hardship</u> ? (waivers determined at next Board meeting)		
<div style="border: 1px solid black; border-radius: 50%; width: 40px; height: 40px; display: flex; align-items: center; justify-content: center; margin: 0 auto;"> YES </div> / NO		
OFFICE USE:		
Park detail required? (see detail sheet)	Police detail needed? (631-1212)	Insurance required (wedding, large event)?
YES / NO	YES / NO	YES / NO
(\$125 per unit)	\$	\$
Detail fee	Usage fee	Other fee
Dates paid and check number(s)		


 Signature of applicant

Audrey V de Rosa
 Name (Please print clearly)

55 Intrepid Circle
 Address

617 939 7368
 Telephone

Approved by:

Superintendent, Recreation & Parks Department

Date approved

Town of Marblehead Recreation & Parks Department

Application for park permit

APPLICATION date: 4/8/13	APPLICANT (name of person paying for permit): Margorie Dixey
------------------------------------	--

INSURANCE REQUIREMENT FOR ALL WEDDINGS & LARGE EVENTS:
(PLEASE CONTACT YOUR INSURANCE PROVIDER OR RENTAL COMPANY FOR ASSISTANCE)

★ **IMPORTANT:** A copy of a 1 million occurrence / 3 million aggregate insurance certificate naming the Town of Marblehead as an additional insured is **REQUIRED** to be provided with the request at the time of application.

EVENT Day & Date: 4/28/13	TIME OF EVENT (begin & end up to 3 hours; INCLUDES set up & clean up): 1:00 pm to 4:00 pm
-------------------------------------	---

EVENT DESCRIPTION & expected attendance (use another page if needed):

Year end Party for Hockey Team.

FACILITY REQUESTED (NOTE: Any parking fees are NOT included in the permit fee):

Green Street Park + One Rink.

Available Facilities:	Devereux beach - barbeque pavilion (2 grills in season)	Devereux beach - Garfield Pavilion (2 grills in season)	Gerry Playground (on Stramski Way) (2 grills in season)	Wedding ceremonies: Chandler Hovey, Crocker Park, or Castle Rock	Other
Residents security deposit:	\$25.00	Due at time of application		\$100.00 fee; Insurance required with ALL applications (see above); No security deposit required	Fees based on request (*see note); please describe on another page
Resident fee:	\$25.00	Due upon approval			
Non - residents security deposit:	\$50.00	Due at time of application			
Non - resident fee:	\$50.00	Due upon approval			
Catered event (Clambake, etc.)	\$2 per person; minimum \$100.00 - \$50 Security Deposit				

PAYMENT: Please submit 2 separate checks made out to "The Town of Marblehead" for the security deposit and fee. The security deposit check will be destroyed once the area is checked to ensure all trash was removed from the property.

APPROVAL: Applications must be made during regular business hours. Standard applications take 1 - 3 business days to approve. Only 1 standard permit for up to 3 hours of use allowed per day per applicant.

* Note: special requests determined by the Board at their next meeting, including fee amounts and any restrictions.

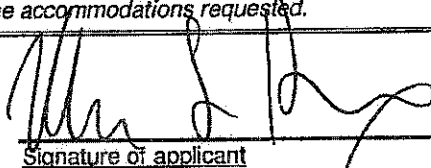
CANCELLATIONS / REFUNDS: requests must be in writing at least 5 business days before event (sorry, no "rain out" refunds).

RESTRICTIONS: Open fires (bonfires) and alcoholic beverages are prohibited on property under the jurisdiction of the Recreation & Parks Department (Code of the Town of Marblehead § 236-1.)

It is expressly understood and agreed that the policies of the Recreation & Parks Commission as described above are to be strictly complied with, and that the undersigned hereby assumes full responsibility for any damages to or loss of Town property in consequence of such use of the accommodations described above, and engages to make the same good without expense to the Town, and the undersigned further agrees to pay promptly such charges as may be made for the accommodations requested.

Request fee waiver(s) <u>due to hardship</u> ? (waivers determined at next Board meeting)	YES / NO
---	----------

OFFICE USE:		
Park detail required? (see detail sheet)	Police detail needed? (631-1212)	Insurance required (wedding, large event)?
YES / NO	YES / NO	YES / NO
(\$125 per unit)	\$	\$
Detail fee	Usage fee	Other fee
Dates paid and check number(s)		


Signature of applicant

Margorie Dixey
Name (Please print clearly)

29 Green St. Marblehead
Address

781-223-5541 (cell)
Telephone

Approved by:

Superintendent, Recreation & Parks Department

Date approved

Brendan Egan

From: Recreation [Recreation@marblehead.org]
Sent: Sunday, April 07, 2013 8:31 PM
To: Park, Rec Dept
Subject: FW: Memorial tree at Crocker Park

From: Amy Thompson[SMTP:AMY_THOMPSON@LOOMIS.ORG]
Sent: Sunday, April 07, 2013 8:31:05 PM
To: Recreation
Subject: Memorial tree at Crocker Park
Auto forwarded by a Rule

Greetings,

I am writing to inquire as to whether there might be an opportunity to plant a memorial tree in honor of my childhood friend, Christina Morris Drew, at Crocker Park. Christina died unexpectedly last May at the young age of 41. She grew up on Union Street within a stone's throw of Crocker. I grew up next door at 4 Union. We spent many happy days with our brothers Michael, Tommy and Peter climbing trees in the park, and I want to plant a tree there as a memorial to her and her parents, Monty and Betsy, longtime Marblehead residents who still live in the house on Union Street. I believe it would bring comfort to them during a very difficult time.

Please let me know how I can make this happen for the Morris family. The one year anniversary of Chrissy's death is on May 26.

Much appreciated,
Amy Thompson

Amy (Eisenhour) Thompson
23 Harvest Ln
Glastonbury, CT 06033
(860) 338-3335 (cell)

Brendan Egan

From: Collins [selcollins@verizon.net]
Sent: Sunday, April 21, 2013 3:56 PM
To: Ozflor@aol.com; Brendan Egan
Subject: Fw: Fwd: Field Issue

Chip and Brendan,

I thought you would like a copy of the Veteran School teachers letter to Mark for your files.

Linda

Hi Mark

Kyle and I just heard about the latest request from softball. As you can imagine we are a little surprised. We want to let you in writing that we are against the skinning the back field for softball. Our spring curriculum is already disrupted by the fence (which we would like to talk to you about) and game day field prep. If the field is skinned, the fall, spring curriculums and all afterschool MVMS activities that use the field will be negatively further impacted.

Over the next few years the middle school will have significant numbers coming through and will need the space for curriculum activities other than softball. When the field design was pushed through several years ago we were assure that it would remain a mutli-use field. The softball program has created a mini stadium for what amounts to nine or ten games per year. When the back field was installed we were told that the backstop would be movable, which as you know did not happen. By skinning the field, we lose another significant portion of our lawn field space.

In closing, softball uses the fields for eight weeks in the spring and in the evenings during the summer. As a middle school, we are here 7 hours a day serving over five hundred students. The Ultimate Frisbee Program and Field Hockey Programs will also be impacted by this action.

We are willing to work with groups when it is in the best interest of the child. However, at this point, we feel that we have made enough concessions to assist in the growth of the softball program. We are all for partnerships, but seems as though the needs of MVMS are being ignored.

If you could keep us in the loop so that we can offer our point of view as things move further.

Thanks for hearing us out.

Sincerely,

Patrick McIntosh
Middle School Physical Education
781-639-3120 x5205
email: mcintosh.patrick@marbleheadschoools.org

FYI



**Town of Marblehead
Zoning Board of Appeals**

Mary Alley Municipal Building
7 Widger Road
Marblehead, MA 01945
Telephone: 781-631-1529
Fax: 781-631-2617

**LEGAL NOTICE
TOWN OF MARBLEHEAD
BOARD OF APPEALS**

The Board of Appeals will hold a public hearing on **Tuesday, April 23, 2013 at 7:30 PM** in the Selectmen's meeting room of Abbot Hall, 188 Washington Street, Marblehead, on the application of the **Town of Marblehead Board of Health** to vary the application of the present Zoning By-law by allowing a Special Permit to demolish the existing transfer station and construct a new transfer station and accessory structures at **5 Woodfin Terrace, Map 160 Parcels 10, 9A, 37, 38, 39 and Map 153 Parcel 1, Map 161 Parcels 2 and 3** in an Unrestricted District and Single Residence District.

This hearing is held in accordance with the provisions of the Marblehead Zoning Bylaw, and Chapter 40A of the General Laws as amended. All interested persons are invited to attend.

Plans and information are available for inspection at the Town of Marblehead Engineering Department, 7 Widger Road, Marblehead, MA.

Alan Lipkind, Secretary
Board of Appeals

**NOTE: ALL MATERIALS INTENDED FOR BOARD CONSIDERATION
MUST BE RECEIVED AT THE ADMINISTRATIVE OFFICE OF THE
BOARD OF APPEALS, 7 WIDGER ROAD, ENGINEERING DEPT., NO
LATER THAN 14 DAYS PRIOR TO THE DATE OF THE HEARING.**

**DEPARTMENT OF ENVIRONMENTAL PROTECTION
WATERWAYS REGULATION PROGRAM**

**Notice of License Application pursuant to M. G. L. Chapter 91
Waterways License Application Number W13-3848
Town of Marblehead, Harbor and Waters Board**

NOTIFICATION DATE: April 20, 2013

Public notice is hereby given of the application by Town of Marblehead, Harbor and Waters Board to construct and maintain a 40 ft. pier extension and two pile gallows at the existing licensed pier, D.E.P. Lic. No. 12885, at Gerry Playground, 26 Stramski Way in the municipality of Marblehead in and over flowed tidelands of Salem Harbor. The proposed use of the project is to provide for public access to navigable waters and is a water dependent project.

The Department will consider all written comments on this Waterways application received by within 30 days subsequent to the "Notification Date". Failure of any aggrieved person or group of ten citizens or more to submit written comments to the Waterways Regulation Program by the Public Comments Deadline will result in the waiver of any right to an adjudicatory hearing in accordance with 310 CMR 9.13(4)(c).

Additional information regarding this application may be obtained by contacting the Waterways Regulation Program at (617) 292-5500. Project plans and documents for this application are on file with the Waterways Regulation Program for public viewing, by appointment only, at the address below. Written comments must be addressed to: David Slagle, MassDEP - WRP, One Winter St., 5th fl., Boston, MA 02108.

SALEM HARBOR

SALEM HARBOR

LAT 42.51
LONG 70.86

LOCUS

PANTRY DR
STRAINS WAY
DODGE RD

LOCUS

0.5 MI

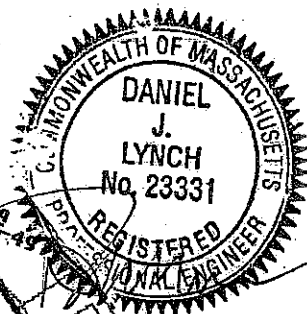
LAT 42.51 LONG 70.86

DEFINITION of HARBOR LINES

CHAP 196 Acts of 1881

SALEM AND MARBLEHEAD
(SEE PG 2)

DISTANCES TO
MARBLEHEAD/SALEM HARBOR
LINE = 0.4 MI
TO OPPOSITE SHORELINE
NAVIGABLES SALEM = 0.8 MI
CHANNEL LINE



NOTES

- ① DATUM IS NAVD
MSL = 0
- ② EXIST PIER LIC # 12885
DATUM MVD - MLW - 0
MARBLEHEAD VETER DATUM
- ③ NOTE 155-47
ASSESSORS SH 155 PIER 47
SEE SH ③
- ④ DIST. TO MARBLEHEAD
SALEM HARBOR LINE = 0.4 MI
- ⑤ DIST TO OPP SHORE (SALEM)
= 0.84 MILES (±)
- ⑥ ALL EXIST STRUCTURES
SEE LIC NO. 12885 (4-6-11) GRAPHIC SCALE
- ⑦ 20' DRAIN / 30' SEWER EASEMENT
CENTER LINE EXIST. PIER

PLAN

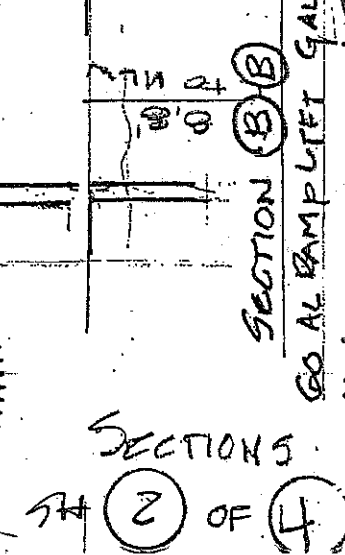
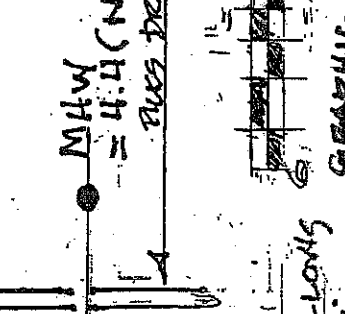
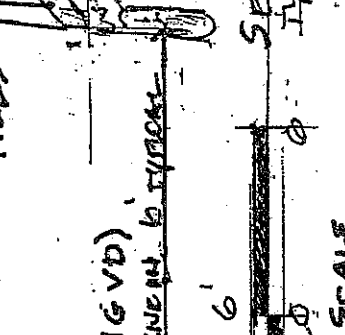
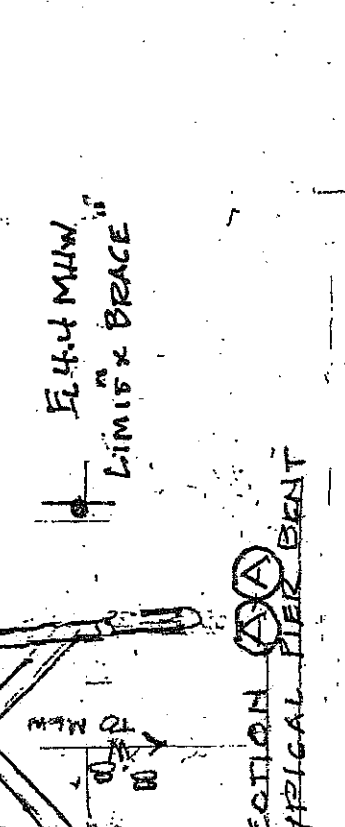
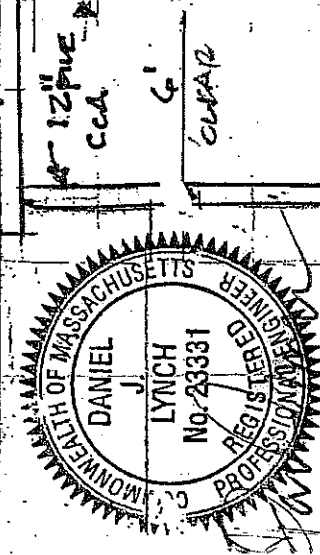
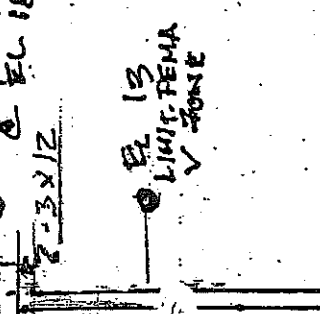
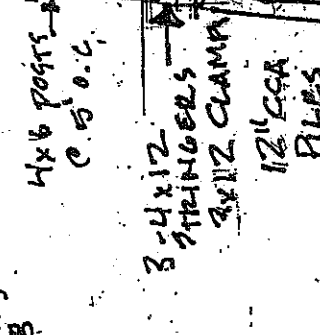
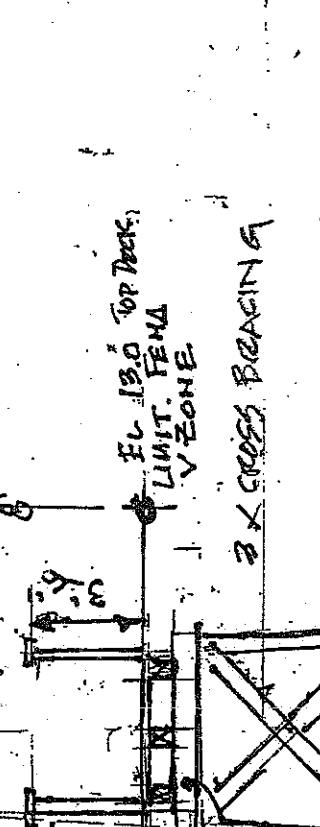
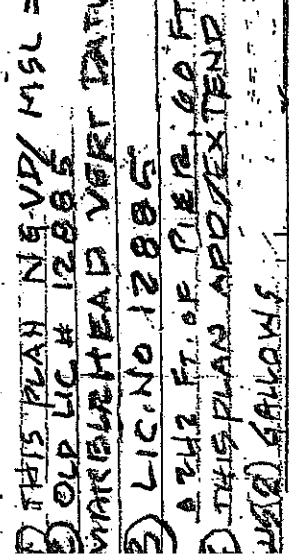
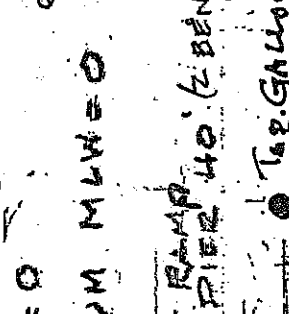
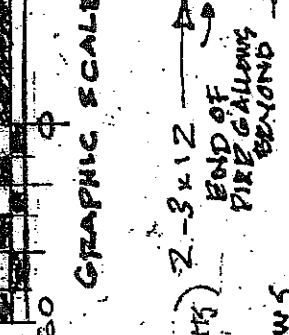
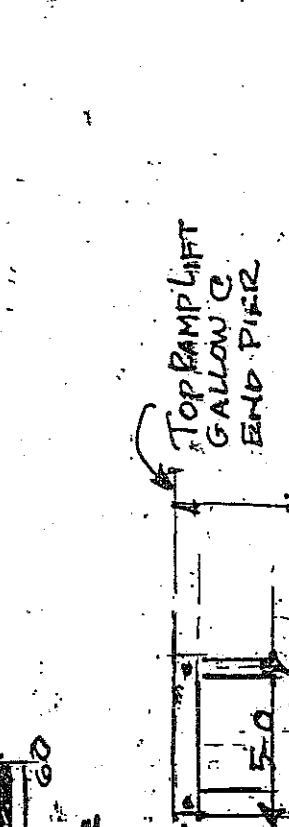
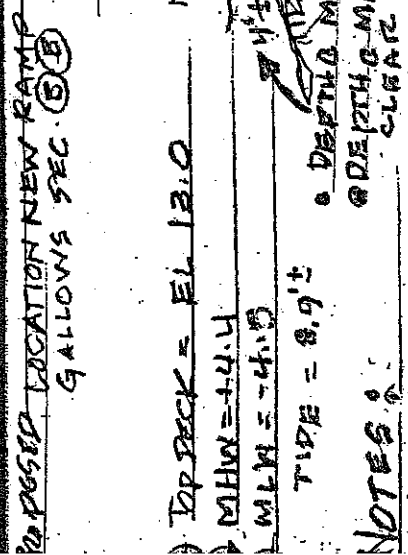
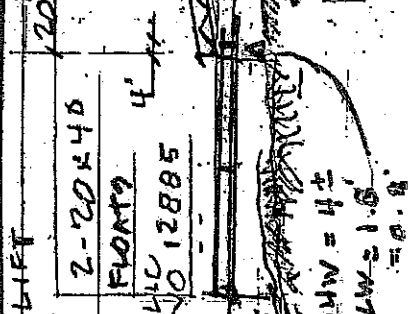
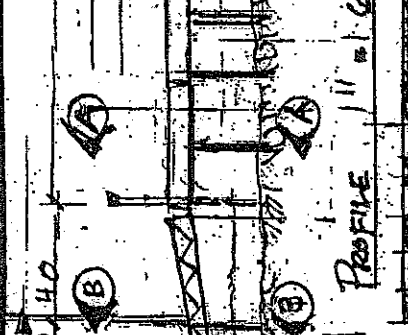
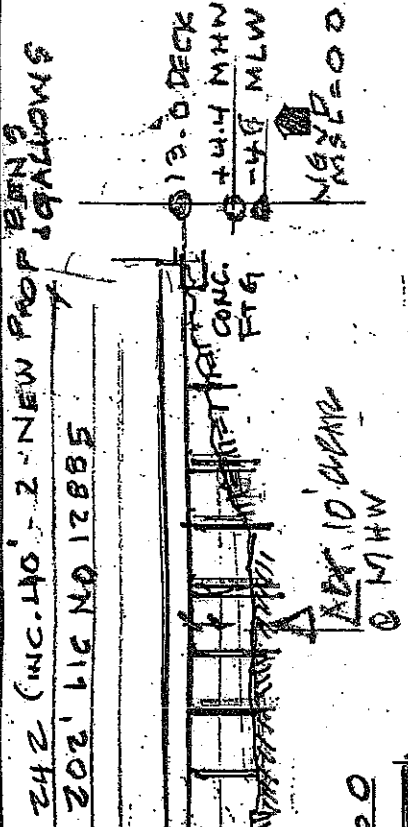
GRAPHIC SCALE

1" = 200'

SH ① OF ④

Plan Accompanying Petition of
Marblehead Harbors and Waters Board
9 Ferry Lane - Marblehead 01945
to construct a 40 ft add and ramp lift galleys
on seaward side of existing Lic # 12885

D.J.Lynch, PE / scale as noted- Mar 01, 2013



PROPOSED LOCATION NEW RAMP LIFT GALLOWS SEC. (B) (B)

242 (INC. 40) - 2 NEW PROP. GALLOWS

202' LIC NO 12885

13.0 DECK
+4.4 MHW
-4.6 MLW
MSL = 0.0

TOP DECK = EL 13.0
MHW = +4.4
MLW = -4.6

TIDE = 8.9'

DEPTH MHW = 4'

DEPTH MHW = 1.5'

NOTES:

1. THIS PLAN NEW V.D. MSL = 0

2. OLD LIC # 12885

3. THIS PLAN APPROXIMATE PIER 40' (2 BENTS)

4. THIS PLAN APPROXIMATE PIER 40' (2 BENTS)

5. GALLOWS

6. GALLOWS

7. GALLOWS

8. GALLOWS

9. GALLOWS

10. GALLOWS

11. GALLOWS

12. GALLOWS

13. GALLOWS

14. GALLOWS

15. GALLOWS

16. GALLOWS

17. GALLOWS

18. GALLOWS

19. GALLOWS

20. GALLOWS

21. GALLOWS

22. GALLOWS

23. GALLOWS

24. GALLOWS

25. GALLOWS

26. GALLOWS

27. GALLOWS

28. GALLOWS

29. GALLOWS

30. GALLOWS

31. GALLOWS

32. GALLOWS

33. GALLOWS

34. GALLOWS

35. GALLOWS

36. GALLOWS

37. GALLOWS

38. GALLOWS

39. GALLOWS

40. GALLOWS

41. GALLOWS

42. GALLOWS

43. GALLOWS

44. GALLOWS

45. GALLOWS

46. GALLOWS

47. GALLOWS

SALEM
SAR FLOW

HARBOR
EPP

(8) H&VD

9.4 mi to
HARBOR LINE
0.84 mi to
OPPOSITE
NAVIGATION
CHANNEL C SALEM
POWER PLANT



EXISTING
2-20x40 FLOATS
LIC NO. 12885

-6.2' NGVD

-6.2' ±
MEAN LOW WATER

* PROPOSED 2 PILE
RAMP LIFT GALLOW S

EXISTING 60'
AL RAMP LIC 12885

* PROPOSED 40'
ADDITION - ADD 4 PILES

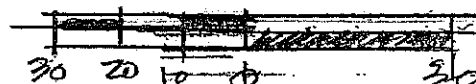
-4.4' MLW
(NGVD)

6' LIMIT "V" ZONE = 13' NGVD
TOP COASTAL BANK
EL 18.5'

CONCRETE

BLOW UP of PROPOSED WORK

SCALE 1" = 30'



* = PROPOSED

--- EXISTING LIC. 12885
— PROPOSED

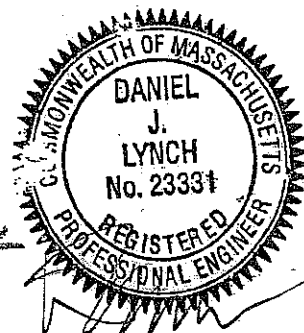
GRAPHIC SCALE

TOT 60' RAMP
EXISTING

40' ADD
PROPOSED

EXIST
202' PIER

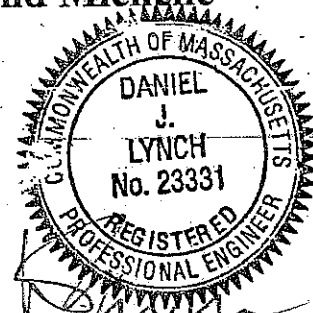
MLW ±
+ MLW
- 4.4'
NGVD



LIST OF ABUTTERS

Assessors' Map and Parcel All Marblehead Addresses

154-17 McGuinness, Darby and Patricia , 1 Stramki Way
154-17A Rousseau, Patrick, 5 Stramski Way
155-49 Smith , Darryl (see 155-48)
155- 48 Smith , Darryl and Patricia , 9 Stramski Way
155-47 Borden , David and Camelia , 60 Pitman Rd
156-15 Goodman , Jill 25 Stramski Way
154 15 Glass , Emery and Annie , 1 Dodge Rd
154-15A Nestor , John and Joan 328 West Shore Dr
154-15B Town of Marblehead , Recreation and Park Dept
154-14 Friedman , Joanne Tr 5 Dodge Rd
154-13 Forbes , Louise 9 Dodge Rd
155-45 Ayer , Benj et al 11 Dodge Rd
155-44 Danforth , Simon and Maryanne 15 Dodge Rd
155-43 Christiansen , Arthur and Nancy , 17 Dodge Rd
155-41 Rieper , Kathryn and Alan 19 Dodge Rd
155-40 Barada , Peter and Annie 21 Dodge Rd
155 - 1 Town of Marblehead Sewer Dept
156 14 Cameron , Grillo and Patricia 14 Liberty Rd
156-13 Bethune , Earl and Mary Anne 16 Liberty Rd
156-39 Crecilius , Robert and Kimberly 18 Liberty Rd
156-12 Ferragamo , Daniel and Michelle



34(4) d(4)