



TOWN OF MARBLEHEAD

Recreation & Parks Department



Recreation and Parks Meeting Minutes

08-25-11

NOTE: The following is a **summary** of matters submitted at a meeting of the Recreation and Parks Commission in accordance with M.G.L. Chapter 39 and the Massachusetts Open Meeting Laws. Meetings are often recorded and tapes used as an aid.

- 1) **Call to order:** Chairman Chip Osborne called the 08/25/11 meeting to order at 6:30 PM.
- 2) **Attendance:**
 - a) **Present (constituting a quorum):** Chip, Derek, Linda, and Jerry.
 - b) **Absent:** Sam.
- 3) **Minutes:** **Motion** made and seconded to approve minutes of the 08/16/11 meeting; all in favor.
- 4) **Old Business:**
 - a) **Memorial Park updates:**
 - i) Chip recommended the vote from 8/10/11 to hire Matt Ulrich be rescinded and recast so Chip can officially recuse himself from the proceedings since he and Matt are related.
 - (1) **Motion** made and seconded to rescind the vote from 8/10/11 to hire Matt Ulrich; 3 in favor, 1 recused (Chip).
 - (2) **Motion** made and seconded to accept the proposal from Matt Ulrich for landscape architect services as proposed at the 8/10/11 meeting; 3 in favor, 1 recused (Chip).
 - ii) Matt Ulrich appeared with some concept boards and a packet of different native plantings, benches, and lighting for the Board's consideration (see attached). Discussion included keeping the plantings beds, trees, fencing, lighting, benches, and any other renovations focused on the circular design of the central monument, the banks renovations, and the overall layout of the downtown area; possibilities of doing memorial trees and/or benches; funding; and breaking the project into 2 phases. Matt is going to prepare a PDF packet with design layouts and tree, plants, fencing, bench, and light options to distribute for the board's consideration. Matt recommended checking to see if the memorial tree that was removed can be relocated with the plaque to a different spot in the park so as to keep the current open space; Board will check with the Veteran's Agent. Matt requested copies of the banks overall design and proposed materials; Jerry will ask the bank for copies. Board agreed that they will all assist Brendan in the research, pricing, and obtaining funds for the renovations.
 - iii) Karen Martin (in attendance) thanked the board for keeping her involved in the proceedings.
- 5) **New Business:**
 - a) Correspondence (attached) requiring no action: 1 Legal notice; 2 notifications to abutters.
 - b) Board discussed Mike's e-mail regarding preparations for the upcoming storm; Foreman Pete James has the crew securing the beach and putting away anything that may blow around or be washed away.
- 6) **Timekeeping:** Meeting adjourned at 7:25 PM.
- 7) **Next meeting:** Scheduled for September 6, 2011; Time and place to be posted.

Respectfully submitted: Ric Reynolds, Marblehead Recreation and Parks Department Clerk

Attachments:

- Meeting notice & agenda, Packet of plantings, benches, and lighting from Matt Ulrich; Correspondence (3)

MARBLEHEAD COMMUNITY CENTER

www.marblehead.org

10 HUMPHREY STREET

MARBLEHEAD, MASSACHUSETTS 01945-1906

TELEPHONE: (781) 631-3350

FAX: (781) 639-3420



DATE POSTED:

Town Clerk Use Only

MEETING NOTICE & AGENDA

POSTED IN ACCORDANCE WITH THE PROVISIONS OF MGL 30A §§18-25

Recreation and Parks Commission

Name of Board/Committee

Address of Meeting: 10 Humphrey Street, Marblehead, MA Room: Conference Room

Thursday
Day of week

August
Month

25
Date

2011
Year

6:30 PM
Time

Agenda or Topics to be discussed listed below (That the chair reasonably anticipates will be discussed)

Approval of minutes from previous meeting – August 16

Discussion:

1. Memorial Park

Old Business Discussion

New Business Discussion

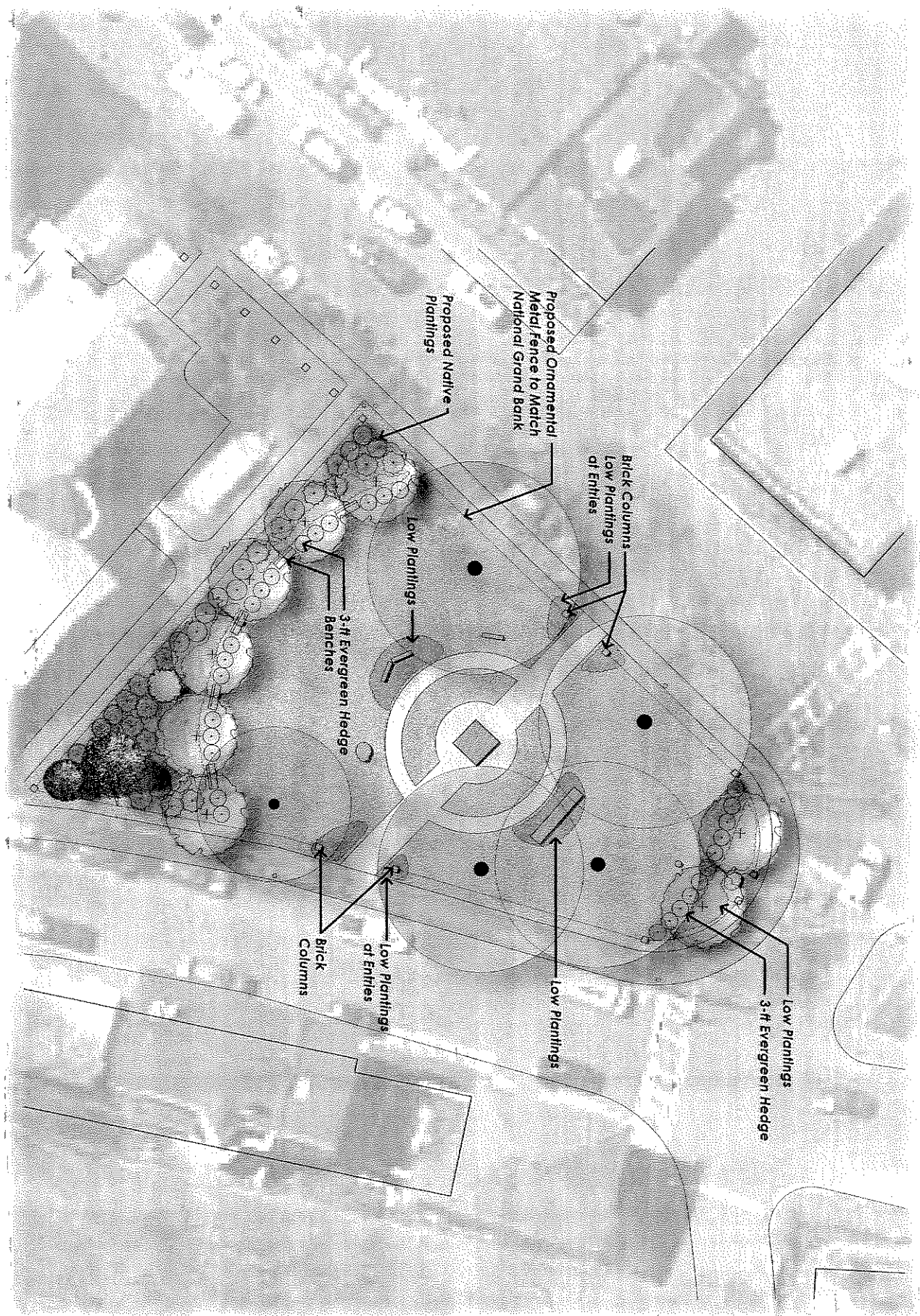
Next Meeting: September 6

THIS AGENDA IS SUBJECT TO CHANGE

Chairperson Chip Osborne

Posted by: Brendan Egan

Date: 08/17/11

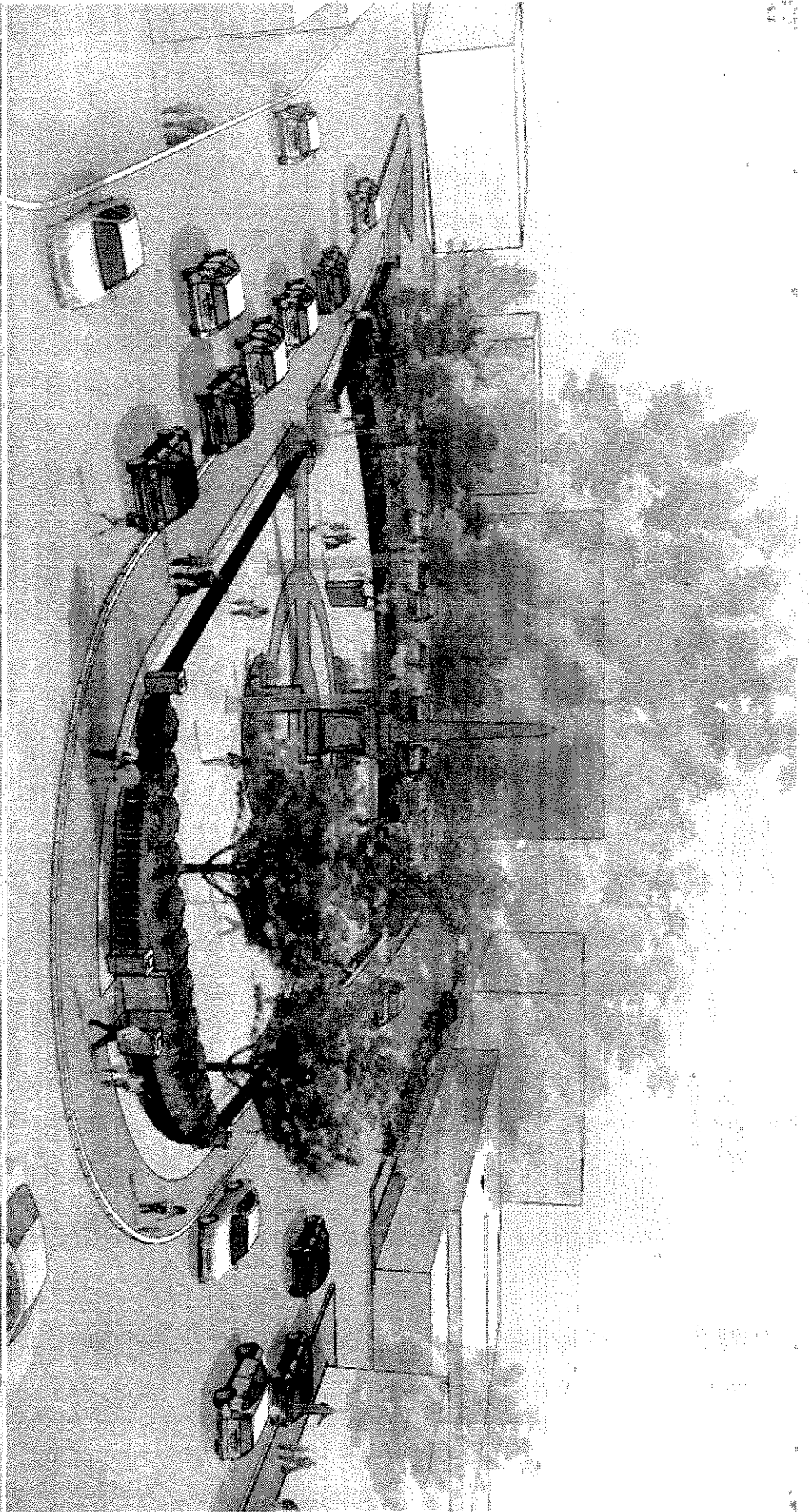
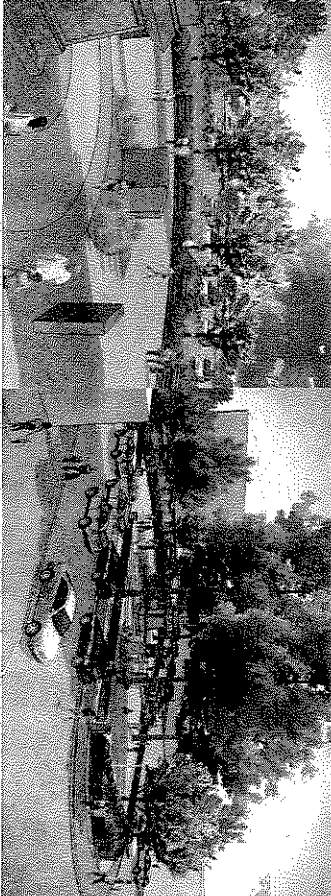
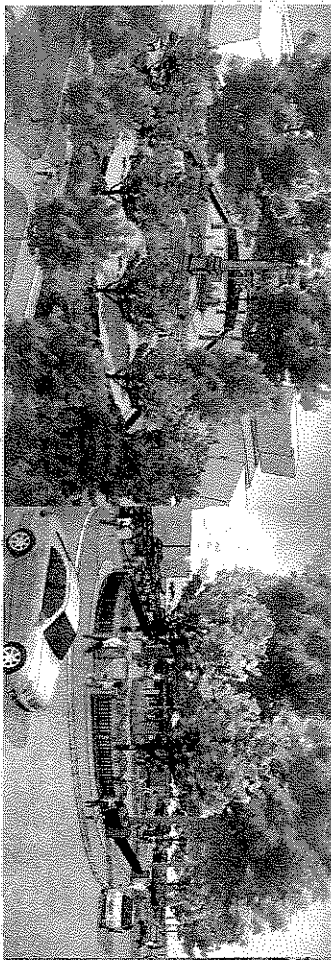


Memorial Park

Marblehead, Massachusetts



Rich Barchard Landscape Architects, LLC
www.la-ba.com 77 Main St. Weymouth, MA 01984 • 617-937-3220



Memorial Park

Marblehead, Massachusetts

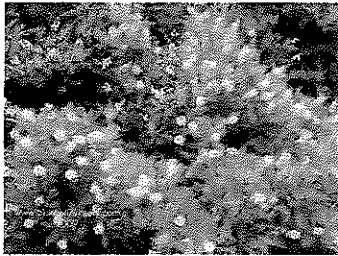


Ullrich Sachbion Construction Architects, P.C.
www.usca.com 37 Main St. Weymouth, MA 01984 781-937-3257



Cornus 'Rutgan' - Stellar Pink Dogwood

STELLAR PINK is a hybrid dogwood (*Cornus florida* x *Cornus kousa*) that was developed by Elwin R. Orton, Jr. as part of the Stellar series of dogwoods released by Rutgers University. It is noted for its vigorous habit, large-bracted flowers, profuse bloom and resistance to anthracnose and dogwood borer. It is a small deciduous tree with a dense, upright habit. It has a uniform width from top to bottom, typically maturing to 15-20' tall and as wide. Flowers bloom in spring. The true dogwood flowers are actually tiny, yellowish green and insignificant, being compacted into button-like clusters. However, each flower cluster is surrounded by four showy, petal-like, pink bracts which open flat, giving the appearance of a single, large, 3-5" diameter, 4-petaled, pink flower. Floral bracts on this cultivar are rounded and overlapping. Oval to elliptic, dark green leaves (4-6" long) turn attractive shades of purple-red in fall. STELLAR PINK is sterile and does not produce fruit. This hybrid cultivar is sometimes sold in commerce under the name of *Cornus x rutgeriensis*.



Clethra alnifolia - Summersweet

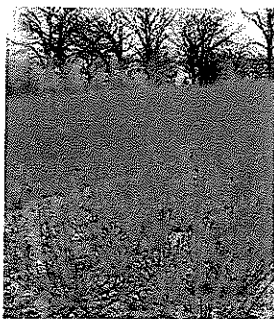
Coastal sweet-pepper or summer sweet is a narrow, 3-6 ft., deciduous shrub, which often spreads into mounded clumps. A tall, many-branched, leafy shrub with spike-like, upright clusters of fragrant white flowers. The shrub has erect, multiple stems; exfoliating bark; and simple, oval, toothed leaves which turn dull yellow to orange in fall. The dense, narrow, cylindric flower spikes are often clustered together at branch ends. Fragrant flowers are white and are followed by brown capsules which persist through winter.

This shrub forms sizable patches and is remarkably free of any disease, insect, or physiological problems. Its dry fruiting capsules remain long after flowering and help identify this plant in winter. Mountain Pepperbush (*C. acuminata*) has more pointed leaves and is found in southern mountains.



Ilex glabra - Inkberry

A mound-shaped, colony-forming shrub, somewhat open with age, 4-6 ft. tall and wide. Lance-shaped, sparingly-toothed, glossy, leathery foliage varies in color from dark- to light-green both in summer and fall. Inconspicuous flowers are followed by black berries which persist well into winter.



Cornus sericea- Redtwig Dogwood

Redosier or red-twig dogwood is a loose, spreading, multi-stemmed shrub, 6-12 ft. tall, with conspicuous red twigs. Dense, flat-topped clusters of creamy-white blossoms are followed by umbrella-shaped clusters of pea-sized white berries. Autumn foliage is colorful. Redosier is deciduous. Very conspicuous red branches in winter.



Kalmia latifolia- Mountain Laurel

The broadleaf evergreen mountain-laurel is usually a 12-20 ft. shrub, but is occasionally taller and single-trunked, attaining small tree stature. Evergreen, many-stemmed, thicket-forming shrub or sometimes a small tree with short, crooked trunk; stout, spreading branches; a compact, rounded crown; and beautiful, large, pink flower clusters. Its flowers are very showy. They are bell-shaped, white to pink

with deep rose spots inside, and occur in flat-topped clusters. The leaves are oval, leathery, and glossy, and change from light-green to dark-green to purple throughout the year.

Mountain Laurel is one of the most beautiful native flowering shrubs and is well displayed as an ornamental in many parks. The stamens of the flowers have an odd, spring like mechanism which spreads pollen when tripped by a bee. The wood has been used for tool handles and turnery, and the burls, or hard knot like growths, for briar tobacco pipes.



Rhododendron spp.

Evergreen, thicket-forming shrub or tree with short, crooked trunk, broad, rounded crown of many stout, crooked branches, and large white blossoms. Great-laurel or rosebay rhododendron is a loose, open, broadleaf evergreen with multiple-trunks, upright branching, and the largest leaves of all native rhododendrons. The plant grows 4-15 ft. in the north, but can grow 30 ft. high in favorable sites. Its foliage is dark blue-green and leathery. Large, bell-shaped, white to purplish-pink, spotted flowers appear in terminal clusters of 16-24.

Rosebay Rhododendron is abundant in the Great Smoky Mountains National Park. Often grown as an ornamental, it is one of the hardiest and largest evergreen rhododendrons. The wood is occasionally used for tool handles, and a home remedy has been prepared from the leaves.



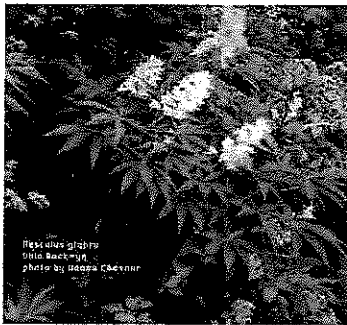
Viburnum trilobum- American Cranberrybush

Highbush-cranberry is a 6-12 ft. shrub which can reach 16 ft. Dense upright or arching branches create a round outline. Maple-like, deciduous foliage is colorful in fall. White, flat-topped clusters of flowers are followed by persistent red berries.



Thuja occidentalis- Techny Arborvitae

In a crowded environment, this tree is slender and not well-branched. In the open, it improves in form and density. The evergreen can be single- or multi-trunked and columnar or conical in shape. Eastern arborvitae can grow 40-60 ft. tall, but under cultivation will probably be no taller than 30 ft. Branches end in flat, spreading, horizontal sprays of fragrant, dark-green foliage which turns yellow-green or slight brown in winter. Resinous and aromatic evergreen tree with angled, buttressed, often branched trunk and a narrow, conical crown of short, spreading branches.



Aesculus parviflora- Bottlebrush Buckeye

A distinctive small buckeye, bottlebrush is a mound-shaped, thicket-forming, deciduous shrub, 6-12 ft. tall, with picturesque, ascending, candelabra-like branching. Lowest branches are horizontal and often rest on the ground. Palmately - compound leaves turn from dark-green to yellow-green in fall. Tall, cylindric spikes of feathery white flowers with pink stamens and red anthers bloom in the heat of early summer after other eastern buckeyes have finished.

The smooth nut is enclosed by a bright yellow husk.

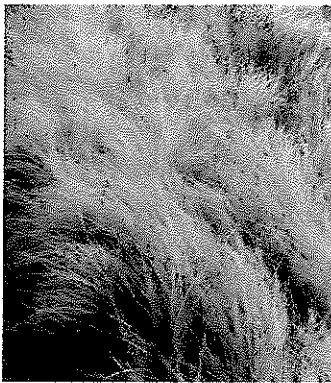
Though susceptible to leaf scorch, bottlebrush is unique among the buckeyes for retaining its foliage, in good condition, well into fall. It is more tolerant of disease and insects than most buckeyes. Leaves may become quite colorful in fall; seemingly dependent on environmental conditions. Excellent for borders, as a specimen, or under shade trees.



Aster novae angliae- New England Aster

New England American-aster is large and showy, growing to 6 or more ft. in height. The perennial's hairy, clasping leaves are arranged densely on its stout stems. Showy, bright, rose-purple flowers with orange-yellow centers bloom in profusion at the tips of the leafy branches.

The flower color is variable, ranging from lavender to blue to white. A pink variety of this species is sometimes grown commercially.



Carex pennsylvanica- Sedge

Pennsylvania sedge is a low, clumped, grass-like perennial, 6-12 in. high, with a cluster of brown seed capsules clinging high on the stem. Foliage is pale-green in spring and summer, turning sandy-tan in fall.



Anemone

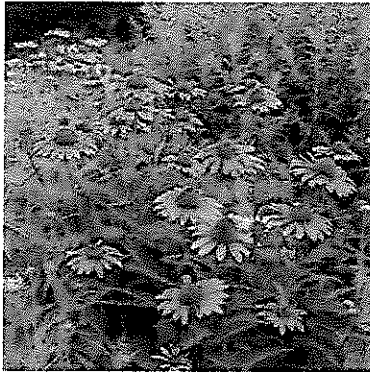
A robust perennial with deeply lobed, basal leaves and an upright, 1-2 ft. stem bearing a single whorl of 3- to 5-parted leaves. A solitary white flower with a golden center springs from the leaf whorl.



Comptonia peregrina- Sweetfern

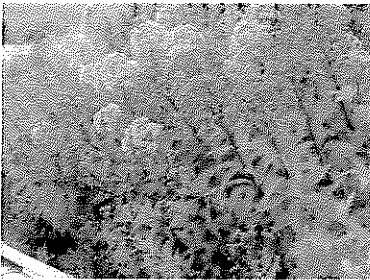
A small, aromatic mound-shaped shrub, 2-4 ft. tall, occurring in dense colonies. Multiple stems with loose, spreading branches. Long, narrow, olive-green leaves, the edges of which have rolled back edges and rounded, fern-like division. Flowers are brown catkins that appear before the leaves unfold. A small nut is enclosed in a bur-like husk.

Sweet-fern is a member of the wax-myrtle or bayberry family (family Myricaceae), which occurs nearly worldwide, with about 40 species of small trees and shrubs; 5 native tree species and 3 shrub species in North America. The leaves are very aromatic when crushed.



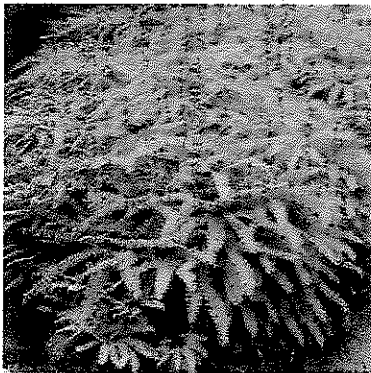
Echinacea purpurea- Purple Coneflower

A popular perennial with smooth, 2-5 ft. stems and long-lasting, lavender flowers. Rough, scattered leaves that become small toward the top of the stem. Flowers occur singly atop the stems and have domed, purplish-brown, spiny centers and drooping, lavender rays. An attractive perennial with purple (rarely white), drooping rays surrounding a spiny, brownish central disk.



Eupatorium- Joe Pye Weed

Trumpetweed or joe-pye weed can grow from 2-7 ft. or taller in soils that are moist through the season. Narrow, lance-shaped leaves, up to 10 in. long, are whorled along the erect stem. The huge, domed flower head is composed of several branches bearing tiny pinkish-lavender florets.



Adiantum pedatum- Maidenhair Fern

Northern maidenhair's delicate, 8-20 in. fronds, with dark, shiny stems, spread their pinnae horizontally in a nearly perfect circle. This graceful, fan-like pattern is unique among native ferns. The fronds arise from a creeping rootstock in clusters. Burgundy red fiddleheads appear in early spring. The roots are wiry and black, colonizing in favorable sites.

This fern is quite easy to grow if it is provided with the right conditions. Western plants are sometimes treated as a separate variety or subspecies, *A. pedatum* var. or *ssp. aleuticum*, but eastern and western plants look very much alike.



Polygonatum biflorum- Solomon's Seal

The zig-zag arching stalks are from 1-5 ft. long. Nodding, greenish-white, tubular flowers hang in pairs from the axils of the oval, conspicuously veined leaves. Hanging from the leaf axils on an arching stem are a few (often 2) greenish-white, bell-like flowers. Blue berries follow the flowers of this perennial. The root is rhizomatous but non-colonizing.

The graceful arching stems and pendulous flowers (often hidden) characterize this common plant.

Another, almost identical species, Hairy Solomons Seal (*P. pubescens*), is distinguished by minute hairs along veins on undersides of leaves. A much larger variety of this species, Great Solomons Seal (*P. biflorum* var. *commutatum*), has larger flowers, 2-10 per cluster, and may be 7 (2.1 m) tall. The rootstalk, or rhizome, of the Solomons Seal is jointed; the leaf stalk breaks away from it, leaving a distinctive scar said to resemble the official seal of King Solomon. Native Americans and colonists used the starchy rhizomes as food.



Juniperus horizontalis

Creeping juniper is a procumbent, mat-like, evergreen shrub, less than 3 ft. tall but up to 20 ft. wide. Long, trailing branches are covered with conspicuously glaucous, soft-textured, blue-green, scale-type foliage. Juvenile foliage is prickly. Dark blue, berry-like cones with a heavy, white bloom, persist through winter.



Vaccinium angustifolium- Lowbush Blueberry

A low, shrub, usually 6 in. to 2 ft. tall and wide. Multiple stems; twiggly branches. Glossy foliage turns from red-green in spring to dark blue-green in summer to maroon-purple in fall. Small, white, pink-tinged, bell-shaped flowers are followed by edible blue fruit.

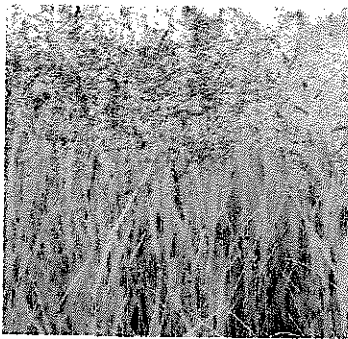
The berries are relished by wildlife and humans alike.



***Asclepias syriaca* – Common Milkweed**

A tall, downy plant with slightly drooping purplish to pink flower clusters.

This plant differs from Showy Milkweed (*A. speciosa*), in having an unbranched stem. The plant contains cardiac glycosides, allied to digitalins used in treating some heart disease. These glycosides, when absorbed by monarch butterfly larvae whose sole source of food is milkweed foliage, make the larvae and adult butterflies toxic to birds and other predators.



***Panicum virgatum*- Switchgrass**

leaves.

Clump-forming, warm-season grass with open, lacy sprays with small seeds, Aug-Oct. Purple stigmas at flowering time. Switchgrass is a 3-6 ft., rhizomatous, loose sod former with a large, open, finely textured, reddish-purple seedhead. Fall color is pale yellow. Bright green leaves occur up and down the stem, turning bright yellow in fall. Switchgrass is a perennial. Grows in large clumps, with many persistent, curly

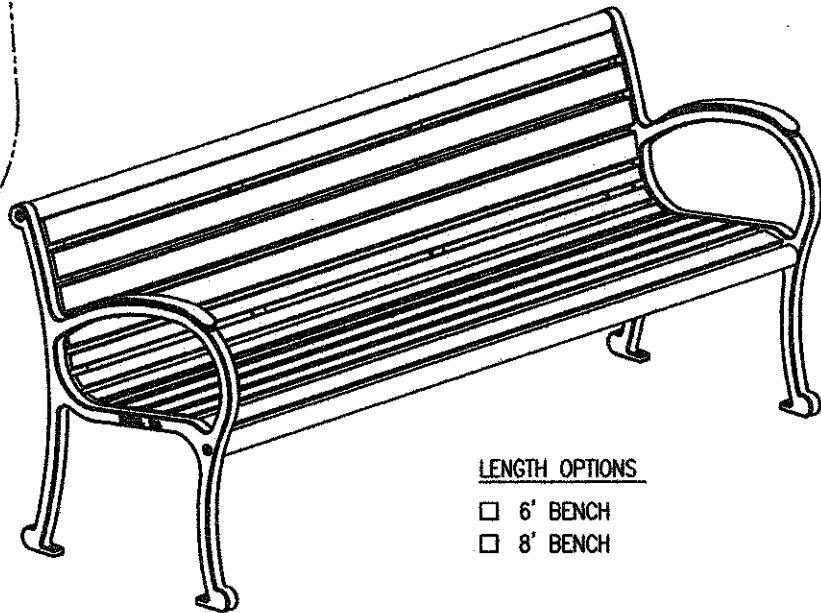
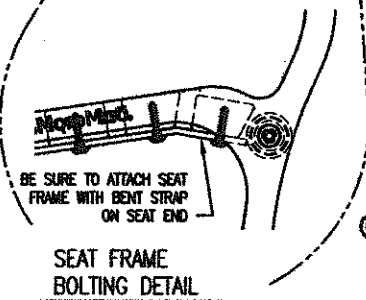
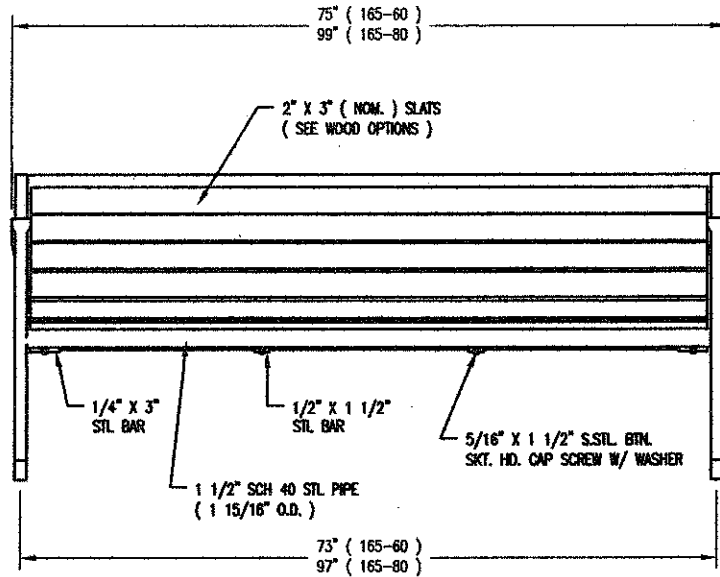
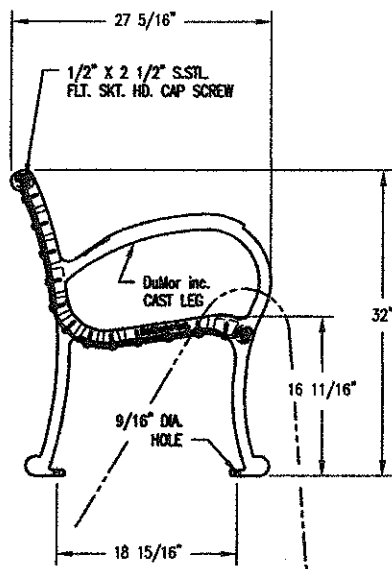
Switchgrass is one of the dominant species of the tallgrass prairie, but also grows along roadsides where moisture is present. The rich, yellow-colored clumps last throughout the winter.



***Rudbeckia hirta*- Black eyed Susan**

This cheerful, widespread wildflower is considered an annual to a short-lived perennial across its range. Bright-yellow, 2-3 in. wide, daisy-like flowers with dark centers are its claim-to-fame. They occur singly atop 1-2 ft. stems. The stems and scattered, oval leaves are covered with bristly hairs. Coarse, rough-stemmed plant with daisy-like flower heads made up of showy golden-yellow ray flowers, with disk flowers forming a brown central cone.

This native prairie biennial forms a rosette of leaves the first year, followed by flowers the second year. It is covered with hairs that give it a slightly rough texture. The Green-headed Coneflower (*R. laciniata*) has yellow rayflowers pointing downward, a greenish-yellow disk, and irregularly divided leaves.



LENGTH OPTIONS

- ☐ 6' BENCH
☐ 8' BENCH

NOTES

- 1.) ALL STL. MEMBERS COATED W/ ZINC RICH EPOXY THEN FINISHED W/ POLYESTER POWDER COATING.
- 2.) ALL WOOD MEMBERS TREATED W/ CLEAR PRESERVATIVE.
- 3.) 1/2" X 3 3/4" EXPANSION ANCHOR BOLTS PROVIDED.

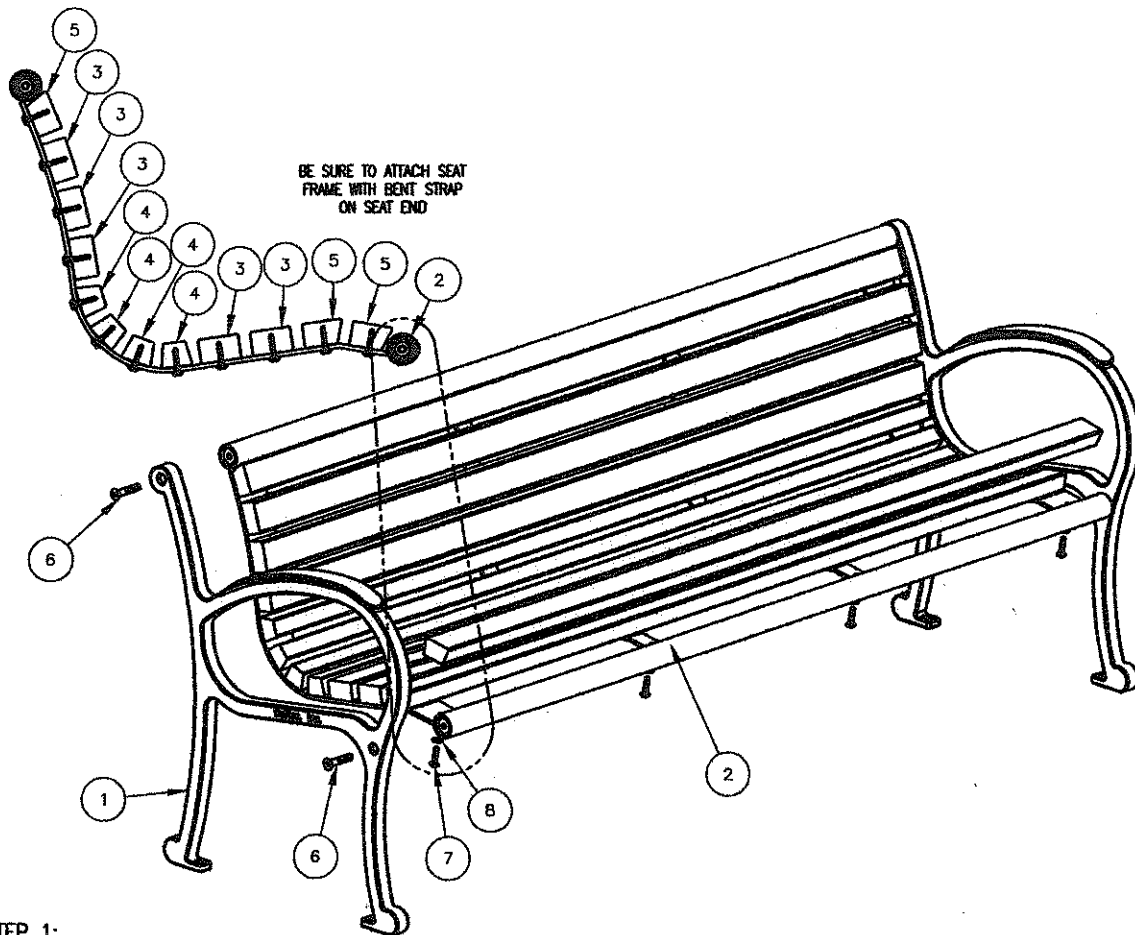
WOOD OPTIONS

- ☐ CLEAR ALL HEART REDWOOD S4S EE
☐ 'C' & BTR. DOUGLAS FIR KD S4S EE
☐ CLEAR IPE S4S EE
☐ OTHER _____

DuMor, inc.
P.O. Box 142 Mifflintown, PA 17059-0142

SCALE : NONE
DATE DRAWN : 9/24/04
DRAWN BY : AWH
DATE REV. : 6/7/09
REV. BY : AWH

TITLE : BENCH
REV. C
DRAWING NUMBER 165 SERIES
SHEET 1 OF 2



STEP 1:

USE 2 - PCS. CAST IRON BENCH SUPPORT W/ BACK (1)
 1 - PC. 6' SEAT FRAME (2)
 4 - PCS. 1/2" X 2 1/2" FLT. SKT. HD. CAP SCR. (6)
 ATTACH CAST IRON SUPPORT W/ BACK (1) TO 6' SEAT
 FRAME (2) USING HARDWARE (6). TIGHTEN TO SNUG FIT.

NOTE:

- 1.) DURING ASSEMBLY PROCEDURE;
DO NOT COMPLETELY TIGHTEN HARDWARE.
- 2.) THE ACTUAL PARTS WILL NOT BE NUMBERED:
NUMBERS ONLY APPLY TO DRAWING.

STEP 2:

USE 5 - PCS. 2" X 3" X 71" WOOD INT'R SLAT (3)
 4 - PCS. 71" WOOD TRAP SLAT (4)
 3 - PCS. 71" WOOD PROFILE SLAT (5)
 48 - PCS. 5/16" X 1 1/2" SS. BTN. SKT. HD. LAG (7)
 48 - PCS. 5/16" SS. FLAT WASHER (8)
 ATTACH SLATS (3, 4 & 5) TO STEP 1 ASSEMBLY USING
 HARDWARE (7 & 8). TIGHTEN TO SNUG FIT.

STEP 3:

UPON COMPLETION OF BENCH ASSEMBLY SQUARE ALL
 COMPONENTS THEN TIGHTEN ALL HARDWARE.

STEP 4:

MOUNT AND ANCHOR AS SPECIFIED.

ITEM	QTY	PART NO	DESCRIPTION
1	2	0-160-00-01	CAST IRON BENCH SUPPORT FOR BACKREST
2	1	0-165-60-01	6' SEAT FRAME
3	5	0-165-60-02	2" X 3" X 71" WOOD INT'R SLAT
4	4	0-165-60-03	71" WOOD TRAP SLAT
5	3	0-165-60-04	71" WOOD PROFILE SLAT
6	4	1-12-065	1/2" X 2 1/2" FLT SKT HD CAP SCR
7	48	1-13-023	5/16" X 1 1/2" SS BTN SKT HD LAG
8	48	1-22-017	5/16" SS FLAT WASHER

DuMor, inc.
 P.O. Box 142 Mifflintown, PA 17059-0142

SCALE : NONE
 DATE DRAWN : 9/24/04
 DRAWN BY : AWH
 DATE REV. : 6/4/09
 REV. BY : AWH

TITLE : BENCH ASSEMBLY

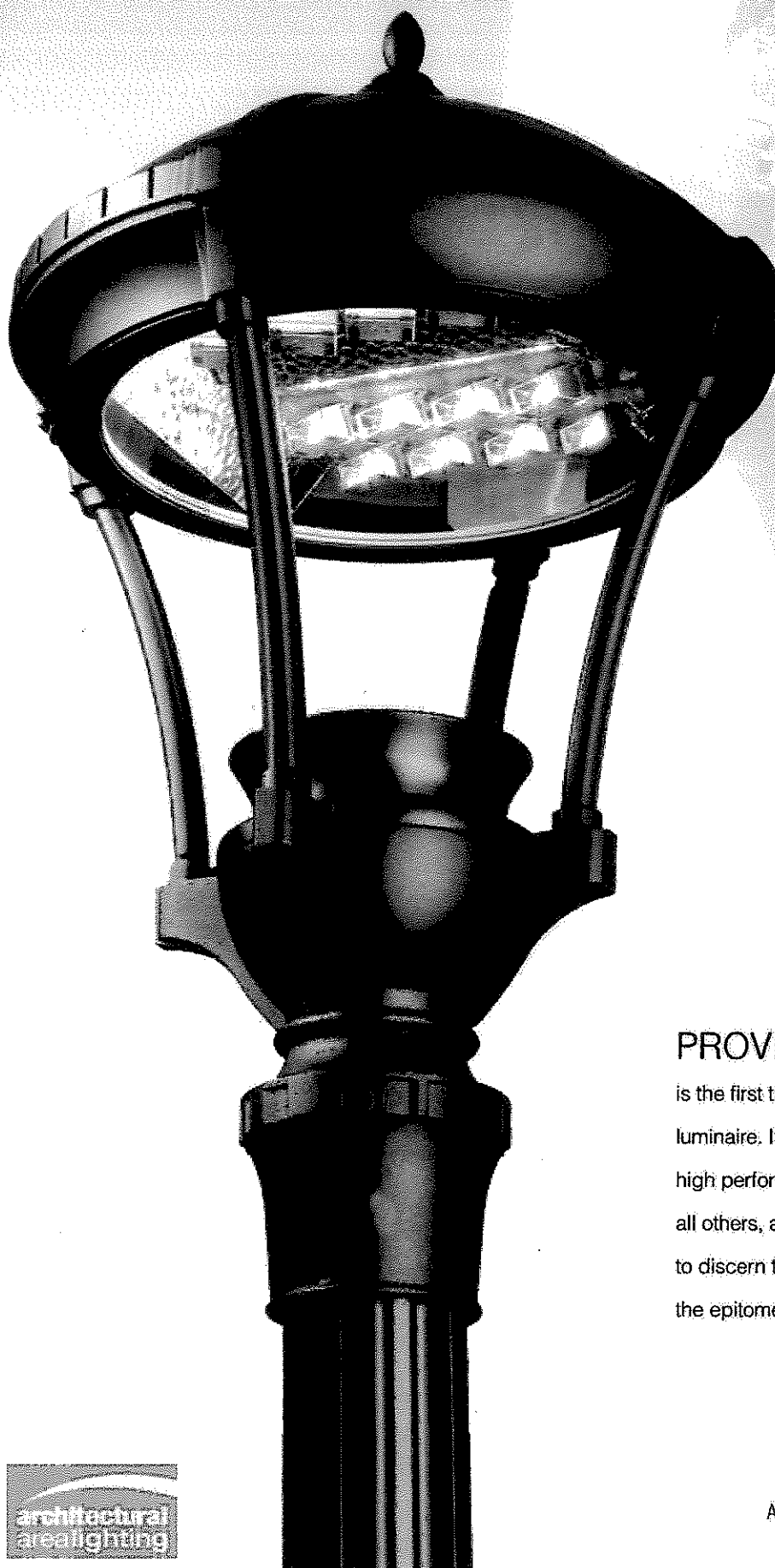
REV.
C

DRAWING
NUMBER

165 SERIES

SHEET
2 OF 2

PROVIDENCE® LED



PROVIDENCE LED

is the first truly elegant LED luminaire. Its distinctive styling and high performance sets it apart from all others, and one look is all it takes to discern that Providence LED is the epitome of quality and beauty.



Town of Marblehead Planning Board

Mary Alley Municipal Building
7 Widger Road
Marblehead, MA 01945
Telephone: 781-631-1529
Fax: 781-631-2617

(FYI)

Legal Notice Site Plan Approval Public Hearing Marblehead Planning Board

The Marblehead Planning Board will hold a public hearing on the application of Donna Eden Cohen Trust for the construction of an addition to an existing single family structure at 29 Orne Street (Map 169 Lot 26) within a Shoreline Central Residence District. This public hearing will be held under Section 200 -37 of the Marblehead Zoning Bylaw on **Tuesday September 13, 2011 at 7:30 pm** in Abbot Hall, in the Selectmen's meeting room. All interested persons are invited to attend. Plans are on file and available for review at the office of the Town Engineer Mary Alley Building 7 Widger Road.

Philip Helmes
Chairman

Notification to Abutters under the Massachusetts Wetlands Protection Act and
Marblehead Wetlands Protection Bylaw

FX1

In accordance with Massachusetts General Laws Chapter 131, Section 40 and Marblehead Bylaws Chapter 194, Section 194-5, you are hereby notified of a public hearing before the Marblehead Conservation Commission:

1. The name and address of the applicant is

J.N. PICARIELLO COMPANY
P.O. BOX 1315, MARBLEHEAD, MA 01945

2. The name and address of the applicant's representative is

SCOTT PATRONICK P.E.
14 BROWN ST., SALEM, MA 01970

3. Type of application (circle appropriate bullet below):

- The applicant has filed a Notice of Intent with the Marblehead Conservation Commission seeking permission to remove, fill, dredge, or alter an area subject to protection under the Wetlands Protection Act (MGL c. 131, § 40) and the Marblehead Wetlands Protection Bylaw (Marblehead Bylaws c. 194).



The applicant has filed a Request for Determination of Applicability with the Marblehead Conservation Commission relative to the Wetlands Protection Act and the Marblehead Wetlands Protection Bylaw.

- The applicant has filed an Abbreviated Notice of Resource Area Delineation with the Marblehead Conservation Commission relative to the Wetlands Protection Act and the Marblehead Wetlands Protection Bylaw.

4. Location of proposed activity:

ONE DOCK LEDGE WAY

5. Copies of the application filed may be examined at the office of the Marblehead Conservation Commission c/o the Marblehead Engineering Department, Mary A. Alley Building, 7 Widger Road, Marblehead, MA 01945 (781-631-1529) between the hours of 8:00 AM and 5:00 PM on Monday, Tuesday and Thursday and from 8:00 AM to 6:00 PM on Wednesday and from 8:00 AM until 12:30 PM on Friday.

6. Copies of the application filed may be obtained from either the applicant or the applicant's representative as indicated below:

- Applicant at

- Applicant's representative at

918-236-6400 CELL

7. Information regarding the date, time and place of the public hearing regarding the application filed may be obtained from the Marblehead Conservation Commission, c/o the Marblehead Engineering Department, 7 Widger Road, Marblehead, MA 01945 by calling 781-631-1529 during normal business hours as previously indicated above.

8. Notice of the public hearing to include the date and place will be published in either the Marblehead Reporter, Salem Evening News, or the Lynn Item least five (5) business days before the hearing.

9. Notice of the public hearing will also be posted at Abbot Hall, 188 Washington Street, Marblehead, MA 01945.

10. You may also contact the Massachusetts Department of Environmental Protection, NERO, 205B Lowell Street, Wilmington, MA 01887 (978-694-3200) regarding this application and the Wetlands Protection Act.

(2 pages to abutters)

FYI

**Notification to Abutters under the Massachusetts Wetlands Protection Act and
Marblehead Wetlands Protection Bylaw**

In accordance with Massachusetts General Laws Chapter 131, Section 40 and Marblehead Bylaws Chapter 194, Section 194-5, you are hereby notified of a public hearing before the Marblehead Conservation Commission:

1. The name and address of the applicant is
Suzanne Fin
2 Dock Ledge Way
Marblehead, MA 01945
2. The name and address of the applicant's representative is

3. Type of application (circle appropriate bullet below):
 - The applicant has filed a Notice of Intent with the Marblehead Conservation Commission seeking permission to remove, fill, dredge, or alter an area subject to protection under the Wetlands Protection Act (MGL c. 131, § 40) and the Marblehead Wetlands Protection Bylaw (Marblehead Bylaws c. 194).
 - ☒ • The applicant has filed a Request for Determination of Applicability with the Marblehead Conservation Commission relative to the Wetlands Protection Act and the Marblehead Wetlands Protection Bylaw.
 - The applicant has filed an Abbreviated Notice of Resource Area Delineation with the Marblehead Conservation Commission relative to the Wetlands Protection Act and the Marblehead Wetlands Protection Bylaw.
4. Location of proposed activity:
2 Dock Ledge Way

5. Copies of the application filed may be examined at the office of the Marblehead Conservation Commission c/o the Marblehead Engineering Department, Mary A. Alley Building, 7 Widger Road, Marblehead, MA 01945 (781-631-1529) between the hours of 8:00 AM and 5:00 PM on Monday, Tuesday and Thursday, and from 8:00 AM to 6:00 PM on Wednesday, and from 8:00 AM until 12:30 PM on Friday.

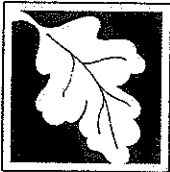
6. Copies of the application filed may be obtained from either the applicant or the applicant's representative as indicated below:

- Applicant at

2 Dock Ledge Way, Marblehead

- Applicant's representative at

7. Information regarding the date, time and place of the public hearing regarding the application filed may be obtained from the Marblehead Conservation Commission, c/o the Marblehead Engineering Department, 7 Widger Road, Marblehead, MA 01945 by calling 781-631-1529 during normal business hours as previously indicated above.
8. Notice of the public hearing, to include the date, time and place will be published in either the Marblehead Reporter, Salem Evening News, or the Lynn Item least five (5) business days before the hearing.
9. Notice of the public hearing will also be posted at Abbot Hall, 188 Washington Street, Marblehead, MA 01945.
10. You may also contact the Massachusetts Department of Environmental Protection, NERO, 205B Lowell Street, Wilmington, MA 01887 (978-694-3200) regarding this application and the Wetlands Protection Act.



Massachusetts Department of Environmental Protection
Bureau of Resource Protection - Wetlands

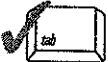
Marblehead
City/Town

WPA Form 1- Request for Determination of Applicability

Massachusetts Wetlands Protection Act M.G.L. c. 131, §40

A. General Information

Important:
When filling out forms on the computer, use only the tab key to move your cursor - do not use the return key.



1. Applicant:
- Suzanne Fin SueFin@gmail.com
Name E-Mail Address
- 2 Dock Ledge Way
Mailing Address
- Marblehead MA 01945
City/Town State Zip Code
- 781-639-0009
Phone Number
- Fax Number (if applicable)

2. Representative (if any):
- Firm
- Contact Name E-Mail Address
- Mailing Address
- City/Town State Zip Code
- Phone Number Fax Number (if applicable)

B. Determinations

1. I request the Marblehead Conservation Commission make the following determination(s). Check any that apply:
- ☐ a. whether the **area** depicted on plan(s) and/or map(s) referenced below is an area subject to jurisdiction of the Wetlands Protection Act.
- ☐ b. whether the **boundaries** of resource area(s) depicted on plan(s) and/or map(s) referenced below are accurately delineated.
- ☒ c. whether the **work** depicted on plan(s) referenced below is subject to the Wetlands Protection Act.
- ☒ d. whether the area and/or work depicted on plan(s) referenced below is subject to the jurisdiction of any **municipal wetlands ordinance or bylaw** of:
- Marblehead
Name of Municipality
- ☐ e. whether the following **scope of alternatives** is adequate for work in the Riverfront Area as depicted on referenced plan(s).



Massachusetts Department of Environmental Protection
Bureau of Resource Protection - Wetlands

Marblehead
City/Town

WPA Form 1- Request for Determination of Applicability

Massachusetts Wetlands Protection Act M.G.L. c. 131, §40

C. Project Description

1. a. Project Location (use maps and plans to identify the location of the area subject to this request):

2 Dock Ledge Way
Street Address

Marblehead
City/Town

map 132-~~62~~
Assessors Map/Plat Number

62
Parcel/Lot Number

- b. Area Description (use additional paper, if necessary):

- Remove existing grass at rear of house
- apply a lyn-pac base
- Set stone slabs in stone dust, each one custom fit
on sight to fit with close seams; pennsylvania
natural Steppers to use for steps where there is a slight
incline in topography

- c. Plan and/or Map Reference(s):

Locus Map Town of M'head

Title
Site plan for Proposed patio
Title

undated
Date
8/15/11
Date

Title

Date

2. a. Work Description (use additional paper and/or provide plan(s) of work, if necessary):

See Landscape Contractor Estimate for
Harbor Side Terrace



Massachusetts Department of Environmental Protection
Bureau of Resource Protection - Wetlands

WPA Form 1- Request for Determination of Applicability

Massachusetts Wetlands Protection Act M.G.L. c. 131, §40

Marblehead
City/Town

D. Signatures and Submittal Requirements

I hereby certify under the penalties of perjury that the foregoing Request for Determination of Applicability and accompanying plans, documents, and supporting data are true and complete to the best of my knowledge.

I further certify that the property owner, if different from the applicant, and the appropriate DEP Regional Office were sent a complete copy of this Request (including all appropriate documentation) simultaneously with the submittal of this Request to the Conservation Commission.

Failure by the applicant to send copies in a timely manner may result in dismissal of the Request for Determination of Applicability.

Name and address of the property owner:

Suzanne Fin

Name

2 Dock Lodge Way

Mailing Address

Marblehead

City/Town

MA

State

01945

Zip Code

Signatures:

I also understand that notification of this Request will be placed in a local newspaper at my expense in accordance with Section 10.05(3)(b)(1) of the Wetlands Protection Act regulations.

Suzanne Fin

Signature of Applicant

8/15/11

Date

Signature of Representative (if any)

Date

Affidavit of Service
(Town Agencies)

Marblehead Wetlands Protection Bylaw

8 for conservation

+

copies to all

I certify under penalties of perjury that the Marblehead Board of Selectmen, Planning Board, Board of Appeals, Board of Health, Building Inspector, and for projects on Marblehead harbors, the Harbormaster, have been provided a copy of the application described below pursuant to the requirements of the Marblehead Wetlands Protection Bylaw (Marblehead Bylaws c.194, § 194-6).

6 in own
envelopes to
drop in slot
(no need to
address
other than
title

Application:

Applicant (print name and affix signature):

Suzanne Fin
Suzanne Fin

Applicant's Representative (print name and affix signature):

