



TOWN OF MARBLEHEAD

Board of Health

Todd Belf Becker, Chair
Helaine R. Hazlett
Michelle Gottlieb

(781) 631-0212

7 Widger Road

Marblehead, MA 01945

Andrew Petty, Director

MARBLEHEAD CASE REPORTING

Case Count

The Marblehead Health Department will make weekly updates on Friday, of confirmed cases, February 5, 2021.

Confirmed cases (recent guidance categorizes all confirmed or presumptive positive cases as positive): **1070**

(January 22, count was 919) (January 29, count was 1000)

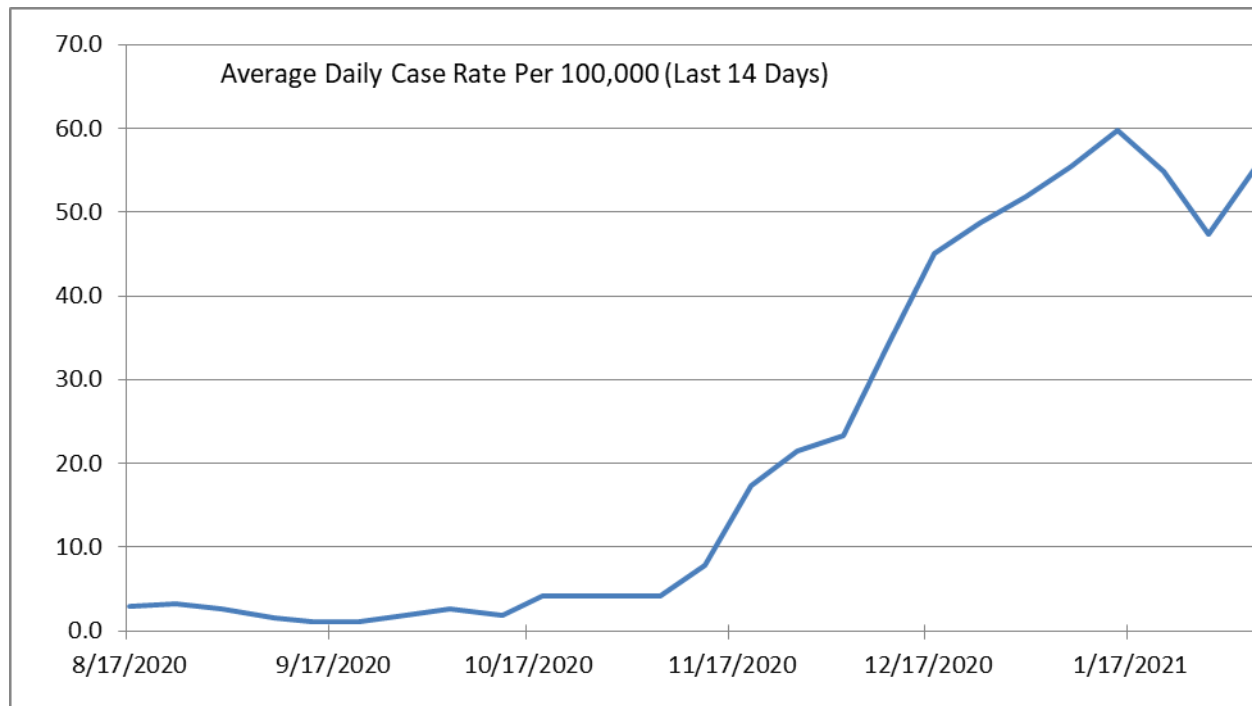
Active cases: **94**

Confirmed deaths: **31**

22 **35** **17** **20** **27** **20** **7** **3**
0-19 years 20-29 years 30-39 years 40-49 years 50-59 years 60-69 years 70-79 years 80+
Total Cases by Age Group from 1/21/2021-2/4/2021

Average Daily Incidence Rate per 100,000 (Last 14 Days)	Relative Change in Case Count	Total Tests	Total Tests (Last 14 Days)	Percent Positivity (Last 14 Days)	Change in Percent Positivity
55.2	Higher	35070	4134	4.11%	Higher

We are currently a Yellow Community per the Massachusetts Average Daily Incidence Rate per 100,000 Color Calculation





TOWN OF MARBLEHEAD

Board of Health

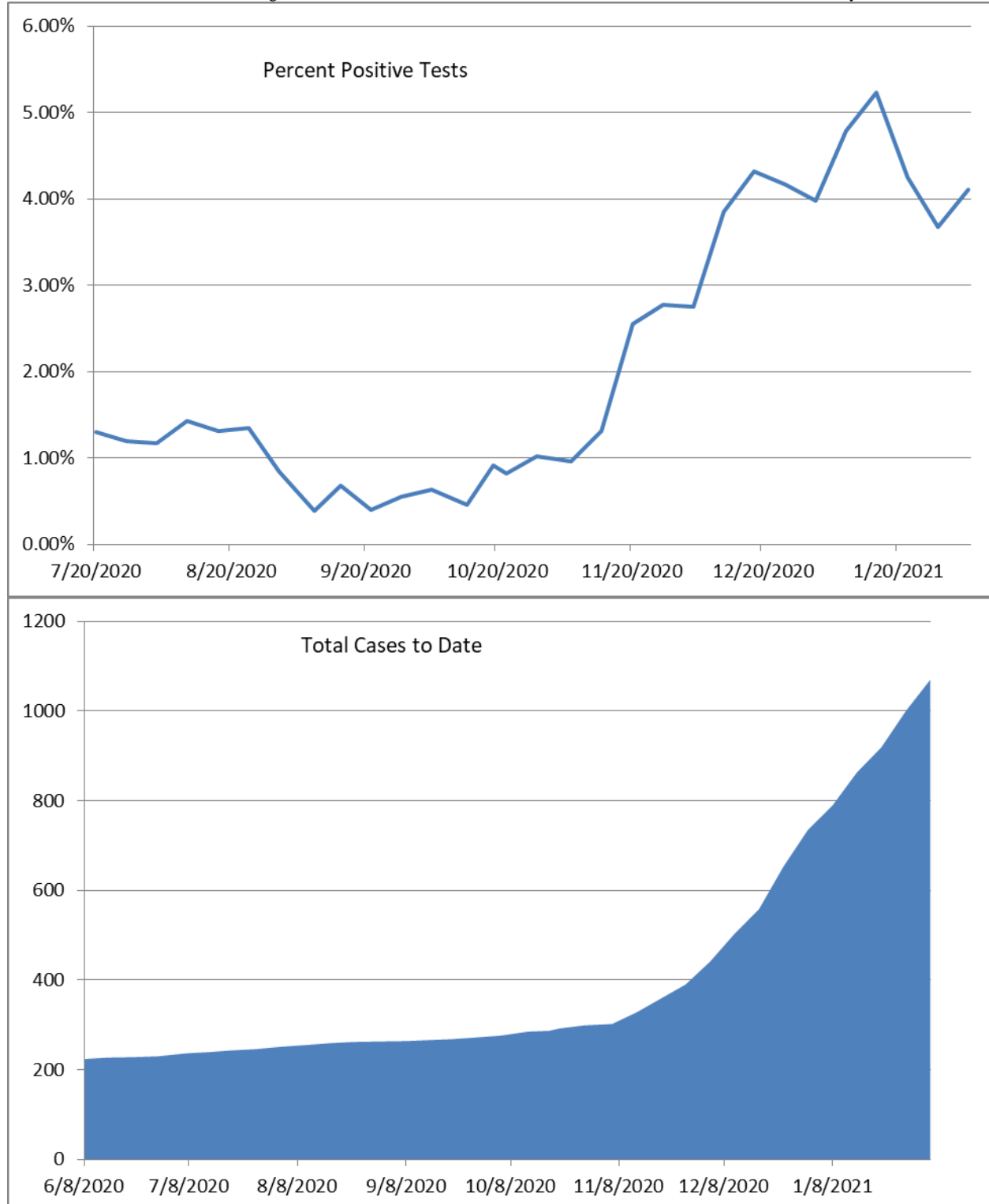
Todd Belf Becker, Chair
Helaine R. Hazlett
Michelle Gottlieb

(781) 631-0212

7 Widger Road

Marblehead, MA 01945

Andrew Petty, Director





TOWN OF MARBLEHEAD

Board of Health

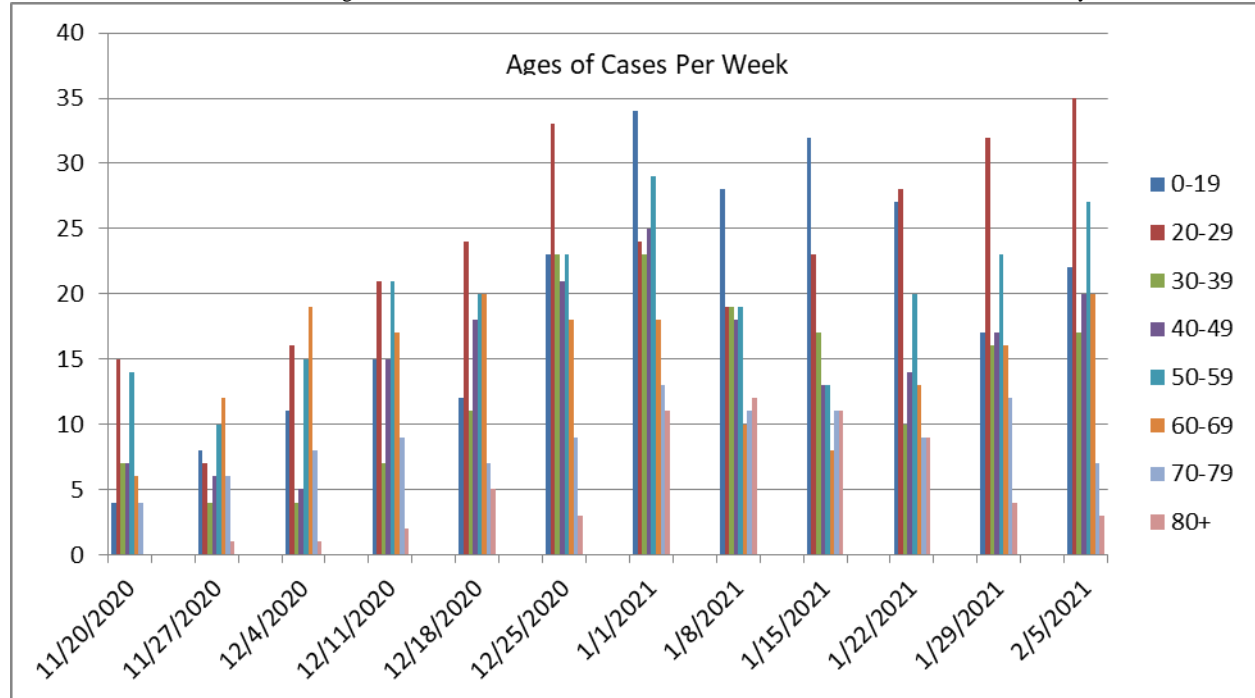
Todd Belf Becker, Chair
Helaine R. Hazlett
Michelle Gottlieb

(781) 631-0212

7 Widger Road

Marblehead, MA 01945

Andrew Petty, Director



Marblehead Health Department (MHD) data regarding case counts come directly from Massachusetts Department of Public Health (MDPH) and their surveillance system (MAVEN). We use the language and terminology per the Centers for Disease Control and Prevention (CDC) guidance, and **recent guidance categorizes all confirmed or presumptive positive cases as positive.**

Social gatherings are contributing to these increases. Transmission is occurring in homes as well as in the work place.

12.52% of the 1070 confirmed cases and 96.667% of the reported coronavirus-related death were either residents or staff members at one of Marblehead's long term care facility.

Please remember that all persons in Massachusetts over the age of 5 are required to wear a mask or face-coverings over their mouth and nose when in a public location, whether indoors and outdoors. Public locations include any place open to the public including, without limitation, grocery stores, pharmacies, and other retail stores; public transportation, taxis, livery, and other ride-sharing vehicles, public streets and ways, and any location that hosts indoor and outdoor events and performances. Masks or cloth face coverings are also required when in a carpool with non-household members'.



TOWN OF MARBLEHEAD

Board of Health

Todd Belf Becker, Chair
Helaine R. Hazlett
Michelle Gottlieb

(781) 631-0212

7 Widger Road

Marblehead, MA 01945

Andrew Petty, Director



Massachusetts Department of Public Health | COVID-19 Dashboard

Hospitalizations from COVID-19

Released on: February 3, 2021
Data as of: February 2, 2021
Caution: recent data may be incomplete

Navigation

Today's Overview

Overview Trends

COVID-19 Cases

COVID-19 Testing

Hospitalization

COVID-19 Deaths

Higher Ed & LTCF

Patient Breakdown

City and Town

Resources

Data Archive

Hospitalizations

There are **1,635** patients hospitalized for COVID-19.

ICU & Intubated Patients

There are **335** patients in Intensive Care Units (ICU) and **203** patients are intubated.

Average Age of Patients

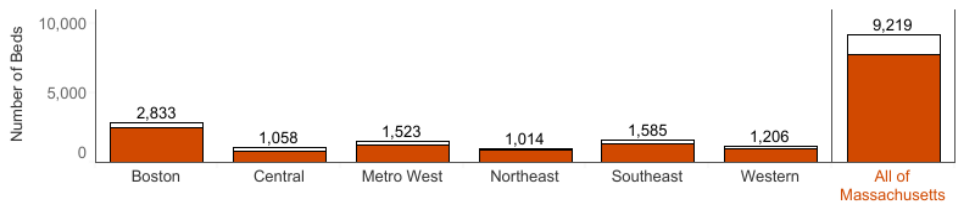
The average age of patients who were hospitalized for COVID-19 was **68** years old.

Select to switch hospital visualizations:

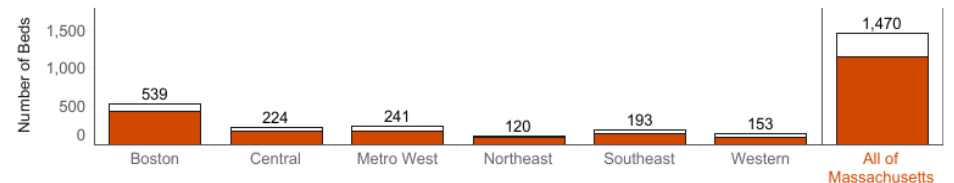
Hospitalization Detail

View availability by date
2/2/2021

Available and **occupied** medical/surgical (not ICU) beds by region



Available and **occupied** ICU beds by region



For purposes of this reporting, "confirmed" are cases with a PCR test. All data included in this dashboard are preliminary and subject to change. Created by the Massachusetts Department of Public Health, Bureau of Infectious Disease and Laboratory Sciences, Office of Integrated Surveillance and Informatics Services.

- People over the age of 65 and people who have underlying health conditions – who are at high risk for COVID-19 – should continue to stay home except for essential errands such as going to the grocery store and to attend to healthcare needs
- All residents are advised to leave home only for healthcare, worship and permitted work, shopping, and activities
- When going to the pharmacy ask if you can fill your prescriptions for 90 days if possible; for some medications this is not allowed. If you are at high-risk, try to use a mail-order service
- All residents are **REQUIRED** to wear face masks or cloth face coverings in all public places, whether indoors or outdoors, even where they are able to maintain 6 feet of distance from others.
- Parents should limit play dates for children
- All residents are advised to wash their hands frequently for at least 20 seconds with soapy water
- All residents are advised to be vigilant, monitor for symptoms and stay home if you feel sick
- Use remote modes of communication like phone or video chat instead of visiting friends or family who are high risk for COVID-19



TOWN OF MARBLEHEAD

Board of Health

Todd Belf Becker, Chair
Helaine R. Hazlett
Michelle Gottlieb

(781) 631-0212

7 Widger Road

Marblehead, MA 01945

Andrew Petty, Director

Effective Monday, January 25th at 5:00am, the Mandatory Early Closure of Businesses Order requiring certain businesses to close by 9:30pm was rescinded. On Monday, January 25th at 5:00am, the following businesses and activities listed below may operate past 9:30pm:

- Restaurants
- Arcades & Other Indoor & Outdoor Recreation (Phase 3, Step 1 businesses only)
- Indoor and Outdoor Events
- Movie Theaters and Outdoor Performance Venues
- Drive-In Movie Theaters
- Youth and Adult Amateur Sports Activities
- Golf Facilities
- Recreational Boating and Boating Businesses (e.g. charter boats)
- Outdoor Recreational Experiences
- Casinos and Horse Tracks/Simulcast Facilities
- Driving and Flight Schools
- Zoos, Botanical Gardens, Wildlife Reserves, Nature Centers
- Close Contact Personal Services (e.g. hair and nail salons)
- Museums/Cultural & Historical Facilities/Guided Tours
- Gyms/Fitness Centers and Health Clubs
- Indoor and Outdoor Pools
- Gatherings may go beyond 9:30pm
- Liquor stores and other retail establishments that sell alcohol may sell alcohol past 9:30pm; adult use cannabis retailers may also sell cannabis after 9:30pm
- *Note – Phase 3, Step 2 businesses must remain fully closed*

Gatherings Limit: The current gathering limits in place since December 26 are also being extended to Monday, February 8. Indoor gatherings and events will remain limited to 10 people. Outdoor gatherings and events will remain limited to 25 people outside. The gathering limit applies to private homes, event venues and public spaces.

All visitors entering Massachusetts, including returning residents, who do not meet an exemption, are required to:

- Complete the [Massachusetts Travel Form](#) prior to arrival
- Quarantine for 10 days or produce a negative COVID-19 test result that has been administered up to 72-hours prior to your arrival in Massachusetts. If not obtained before entry to Massachusetts, a test may be obtained after arrival. However, all such arriving travelers must immediately begin the 10-day quarantine until a negative test result has been received. Failure to comply may result in a **\$500 fine per day**.

Learn where you will fit into the COVID-19 vaccine distribution timeline.



TOWN OF MARBLEHEAD

Board of Health

Todd Belfbecker, Chair
Helaine R. Hazlett
Michelle Gottlieb

(781) 631-0212

7 Widger Road

Marblehead, MA 01945

Andrew Petty, Director

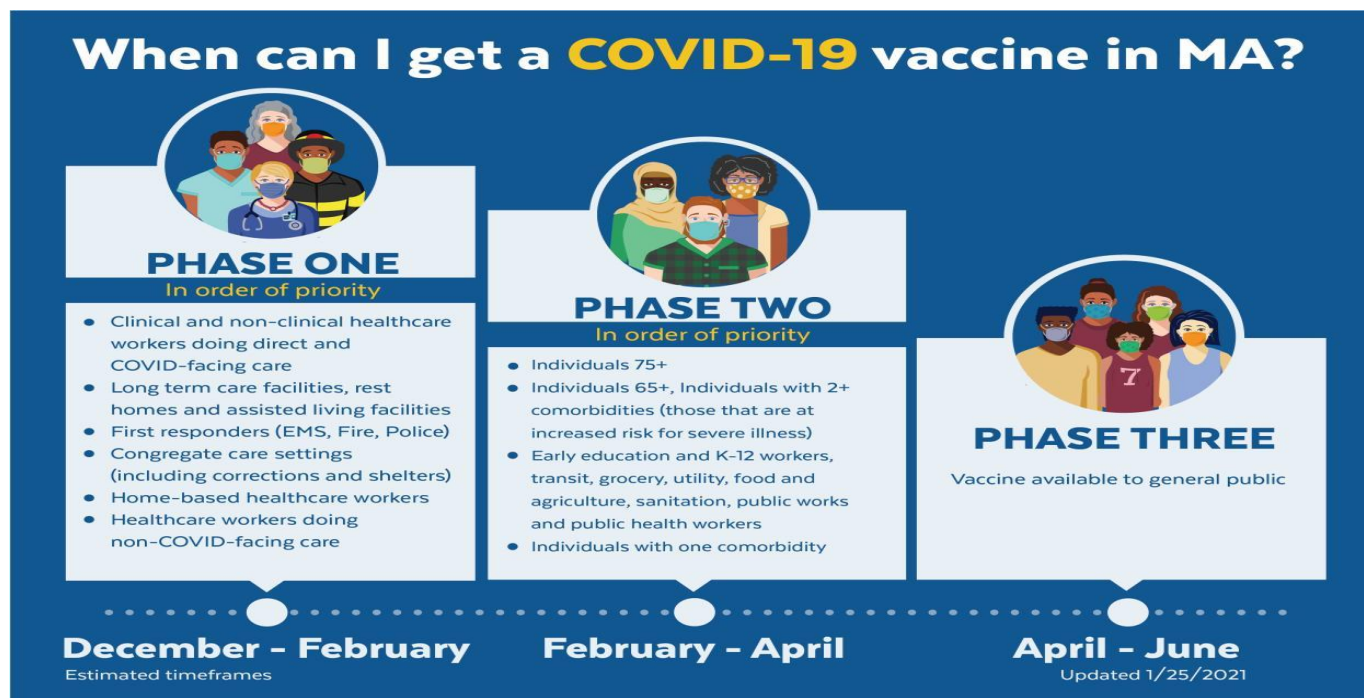
The Baker-Polito Administration and the Department of Public Health developed a vaccine distribution timeline after extensive consultation with the [Massachusetts Vaccine Advisory Group](#), made up of leaders from health care, the faith community, community organizations, local government, and others.

The timeline reflects several priorities: protecting our most vulnerable, maintaining health care system capacity, and addressing inequities in health care access and COVID-19 burden.

Everyone in Phase 1 & individuals 75+ can get the COVID-19 vaccine now.

Due to high demand and constrained vaccine supply, COVID-19 Vaccination appointments are limited. More appointments will be available based on supply from the Federal Government. Appointments will be added on a rolling basis.

Vaccine distribution in MA will occur in a phased approach:



This list will be updated Tuesdays and Thursdays by 5pm in response to questions submitted via COVID-19-Vaccine-Plan-MA@mass.gov

Overview of Current Status



TOWN OF MARBLEHEAD

Board of Health

Todd Belf Becker, Chair
Helaine R. Hazlett
Michelle Gottlieb

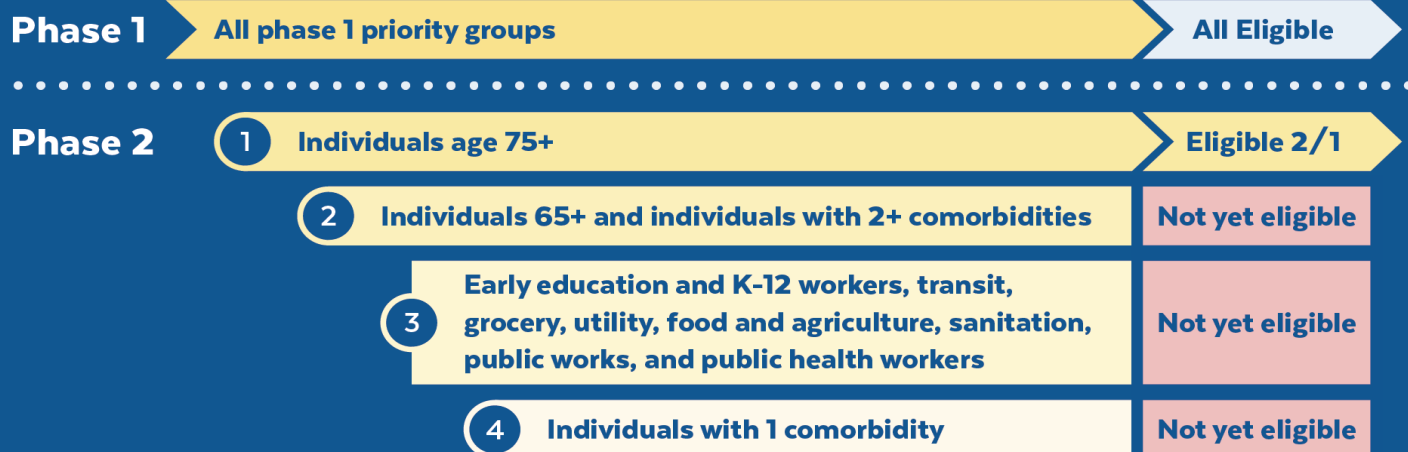
(781) 631-0212

7 Widger Road

Marblehead, MA 01945

Andrew Petty, Director

COVID-19 Vaccination in MA: Phase 1 & 2 Eligibility Status



COVID-19 Vaccine Updates

- **NEW** Residents and staff of low-income and affordable **senior housing** added to first priority in Phase 2
- **NEW** COVID-19 Vaccine Locations for Health Care Workers <https://www.mass.gov/info-details/covid-19-vaccine-locations-for-health-care-workers>
- **NEW** COVID-19 Vaccinations for Congregate Care Settings <https://www.mass.gov/info-details/covid-19-vaccinations-for-congregate-care-settings>
 - Vanity URL: [Mass.gov/congregatecarevaccine](https://www.mass.gov/congregatecarevaccine)
- **NEW** COVID-19 Vaccinations for Senior Housing Settings <https://www.mass.gov/info-details/covid-19-vaccinations-for-senior-housing-settings>
- **NEW** COVID-19 vaccine locations for individuals currently eligible to be vaccinated <https://www.mass.gov/info-details/covid-19-vaccine-locations-for-individuals-currently-eligible-to-be-vaccinated>
- When can I get the COVID-19 Vaccine? <https://www.mass.gov/info-details/when-can-i-get-the-covid-19-vaccine>
- COVID-19 Vaccine Distribution Phases (timing by group) <https://www.mass.gov/info-details/when-can-i-get-the-covid-19-vaccine#overview-and-current-status->
- Stop COVID-19 Vaccine Graphics (includes first responders, general, and vaccine timeline graphics): <https://www.mass.gov/info-details/stop-covid-19-vaccine-graphics>
- Email Address to send vaccine questions: covid-19-vaccine-plan-ma@mass.gov
- Guidance for health workers who have been vaccinated <https://www.mass.gov/info-details/massachusetts-covid-19-vaccine-program-mcwp-guidance-for-vaccine-providers-and>

Additional Information can be found at the following links

Daily Dashboard Mass.gov

www.mass.gov/info-details/covid-19-response-reporting#covid-19-daily-dashboard-

COVID-19 Weekly health Report



TOWN OF MARBLEHEAD

Board of Health

Todd Belf Becker, Chair
Helaine R. Hazlett
Michelle Gottlieb

(781) 631-0212

7 Widger Road

Marblehead, MA 01945

Andrew Petty, Director

www.mass.gov/info-details/covid-19-response-reporting#covid-19-weekly-public-health-report-

Positive COVID cases in Schools

www.doe.mass.edu/covid19/positive-cases/

Resources & hotlines

- [Create a profile and sign-up for COVID-19 alerts](#) by text, email, or phone call in your preferred language.
- [Call 2-1-1](#) or use [live chat](#) for non-emergency questions and help
- Call [Crisis Counseling Assistance Program](#) | (888) 215-4920
- [Email](#) the Governor's Office or call (617) 725-4005

Abuse & assault

- Domestic violence and sexual assault:
 - Massachusetts | [Call SafeLink](#) at (877) 785-2020 or access [SafeLink live chat](#). For deaf and hard-of-hearing call (877) 785-2020, or by TTY at (877) 521-2601
 - [Download SafeLink flyers](#) to post on the wall or use in Social Media.
 - National | Call Domestic Violence 24/7 Crisis Hotline at (800) 799-7233
 - National | Call Sexual Assault 24/7 Crisis Hotline at (800) 656-4673
- Child abuse or endangerment:
 - Mon - Fri, 8:45 a.m. - 5:00 p.m. | [Find and call your local DCF office](#)
 - Sun - Sat, 5:00 p.m. - 8:45 a.m. | Call Child-At-Risk hotline at (800) 792-5200

Nursing homes

- Call [Nursing Home Family Resource](#) line at (617) 660-5399

If you or a family member are experiencing a mental health or substance use disorder crisis, the Emergency Services Program/Mobile Crisis Intervention (ESP/MCI) is available 24 hours a day, 7 days a week, 365 days a year. Anyone may contact ESP/MCI for assistance. Call toll-free at 1 (877) 382-1609

Weekly Case report will come out on Friday morning after 9am