



TOWN OF MARBLEHEAD

Board of Health

Todd Belfecker, Chair
Helaine R. Hazlett
Michelle Gottlieb

(781) 631-0212

7 Widger Road

Marblehead, MA 01945

Andrew Petty, Director

MARBLEHEAD CASE REPORTING

Case Count

The Marblehead Health Department will make weekly updates on Friday, of confirmed cases, January 8, 2021.

Confirmed cases (recent guidance categorizes all confirmed or presumptive positive cases as positive): **789**

(December 25 count was 653) (January 1 count was 735)

Active cases: **107**

Confirmed deaths: **31**

28	19	19	18	19	10	11	12
0-19 years	20-29 years	30-39 years	40-49 years	50-59 years	60-69 years	70-79 years	80+
Total Cases by Age Group from 12/24/2020-1/7/2021							

3673 COVID Tests taken by Marblehead Residents in the last 14 days 4.79 % positive

Average Daily Incidence Rate per 100,000 (Last 14 Days) 55.5

We are currently a Yellow Community Per the Massachusetts Average Daily Incidence Rate Per 100,000 Color Calculation

Social gatherings are contributing to these increases. Transmission is occurring in homes as well as in the work place. 16.98% of the 789 confirmed cases and 96.667% of the reported coronavirus-related death were either residents or staff members at one of Marblehead's long term care facility.

Marblehead Health Department (MHD) data regarding case counts come directly from Massachusetts Department of Public Health (MDPH) and their surveillance system (MAVEN). We use the language and terminology per the Centers for Disease Control and Prevention (CDC) guidance, and **recent guidance categorizes all confirmed or presumptive positive cases as positive.**

Please remember that all persons in Massachusetts over the age of 5 are required to wear a mask or face-coverings over their mouth and nose when in a public location, whether indoors and outdoors. Public locations include any place open to the public including, without limitation, grocery stores, pharmacies, and other retail stores; public transportation, taxis, livery, and other ride-sharing vehicles, public streets and ways, and any location that hosts indoor and outdoor events and performances. Masks or cloth face coverings are also required when in a carpool with non-household members'.

COVID-19 cases and hospitalizations continue to rise in Massachusetts. Social gatherings are contributing to these increases. Left unchecked, the current COVID-19 case growth poses a risk to our healthcare system.

It is critically important that everybody follows the steps listed below to protect lives and to preserve the capacity of our acute care hospitals and other healthcare systems.

- Stay home between the hours of 10pm-5am.
- Between 5am-10pm, only leave home to go to work or school or for essential needs such as seeking emergency medical care, going to the grocery store or pharmacy, picking up take-out food, or receiving deliveries. If you do leave home, practice social distancing by staying 6 feet away from others and wearing a face covering.
- **Don't have gatherings in your home with anybody outside of your household.**
- Comply with all Governor's Orders, including orders requiring face coverings, limiting gatherings, and mandating early closure of businesses.



TOWN OF MARBLEHEAD

Board of Health

Todd Belf Becker, Chair
Helaine R. Hazlett
Michelle Gottlieb

(781) 631-0212

7 Widger Road

Marblehead, MA 01945

Andrew Petty, Director

- Practice social distancing and avoid touching surfaces frequently touched by others when you're outside your home.
- Use remote modes of communication like phone or video chat instead of visiting friends or family.

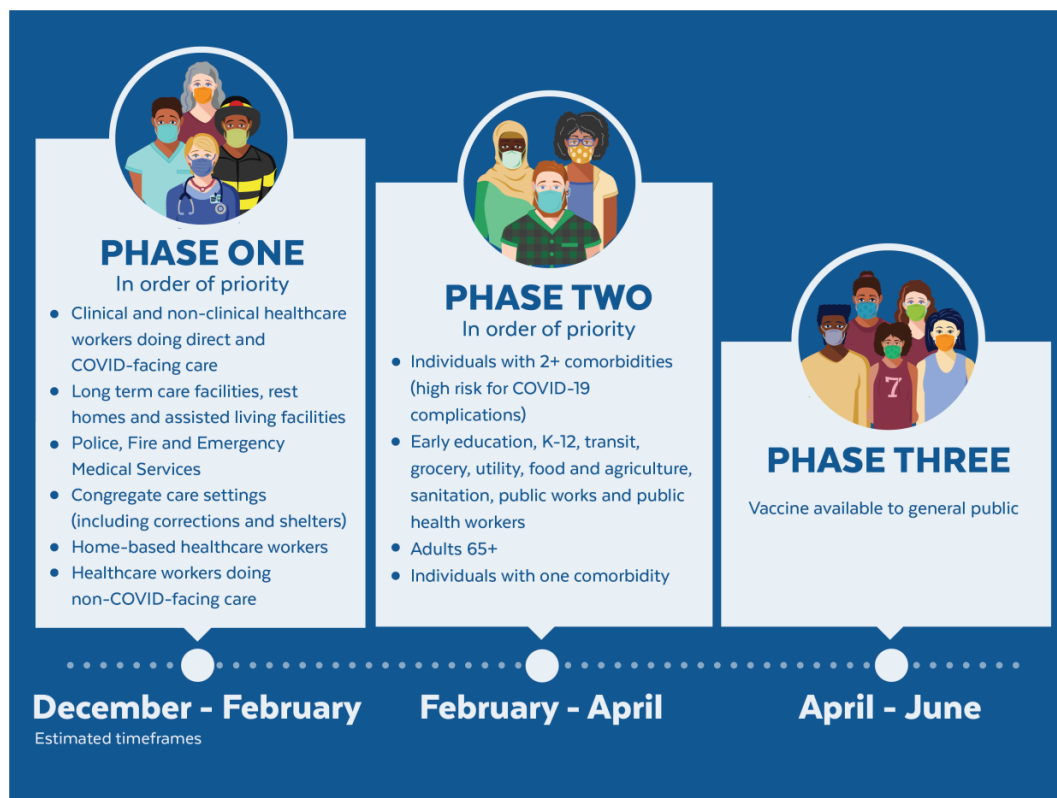
All travelers arriving to Massachusetts – including returning residents, who do not meet an exemption, are required to self-quarantine for 10 days or produce a negative COVID-19 test result, except travelers from Hawaii. If you had close contact with a person who has been diagnosed with COVID-19, get tested, self-quarantine (stay home) and monitor your health for symptoms of COVID-19 for 14 days after your last contact (even if you have a negative test result).

Learn where you will fit into the COVID-19 vaccine distribution timeline.

The Baker-Polito Administration and the Department of Public Health developed a vaccine distribution timeline after extensive consultation with the [Massachusetts Vaccine Advisory Group](#), made up of leaders from health care, the faith community, community organizations, local government, and others.

The timeline reflects several priorities: protecting our most vulnerable, maintaining health care system capacity, and addressing inequities in health care access and COVID-19 burden.

Vaccine distribution in MA will occur in a phased approach:



This list will be updated Tuesdays and Thursdays by 5pm in response to questions submitted via COVID-19-Vaccine-Plan-MA@mass.gov

Additional Information can be found at the following links

Daily Dashboard Mass.gov

www.mass.gov/info-details/covid-19-response-reporting#covid-19-daily-dashboard-



TOWN OF MARBLEHEAD

Board of Health

Todd Belf Becker, Chair
Helaine R. Hazlett
Michelle Gottlieb

(781) 631-0212

7 Widger Road

Marblehead, MA 01945

Andrew Petty, Director

COVID-19 Weekly health Report

www.mass.gov/info-details/covid-19-response-reporting#covid-19-weekly-public-health-report-

Positive COVID cases in Schools

www.doe.mass.edu/covid19/positive-cases/

Weekly Case report will now come out on Friday morning after 9am, to be more in line with the state