



# TOWN OF MARBLEHEAD

## Board of Health

Todd Belf Becker, Chair  
Helaine R. Hazlett  
Michelle Gottlieb

(781) 631-0212

7 Widger Road

Marblehead, MA 01945

Andrew Petty, Director

## MARBLEHEAD CASE REPORTING

### Case Count

The Marblehead Health Department will make weekly updates on Friday, of confirmed cases, February 12, 2021.

Confirmed cases (recent guidance categorizes all confirmed or presumptive positive cases as positive): **1110**

(January 29, count was 1000) (February 5, count was 1070)

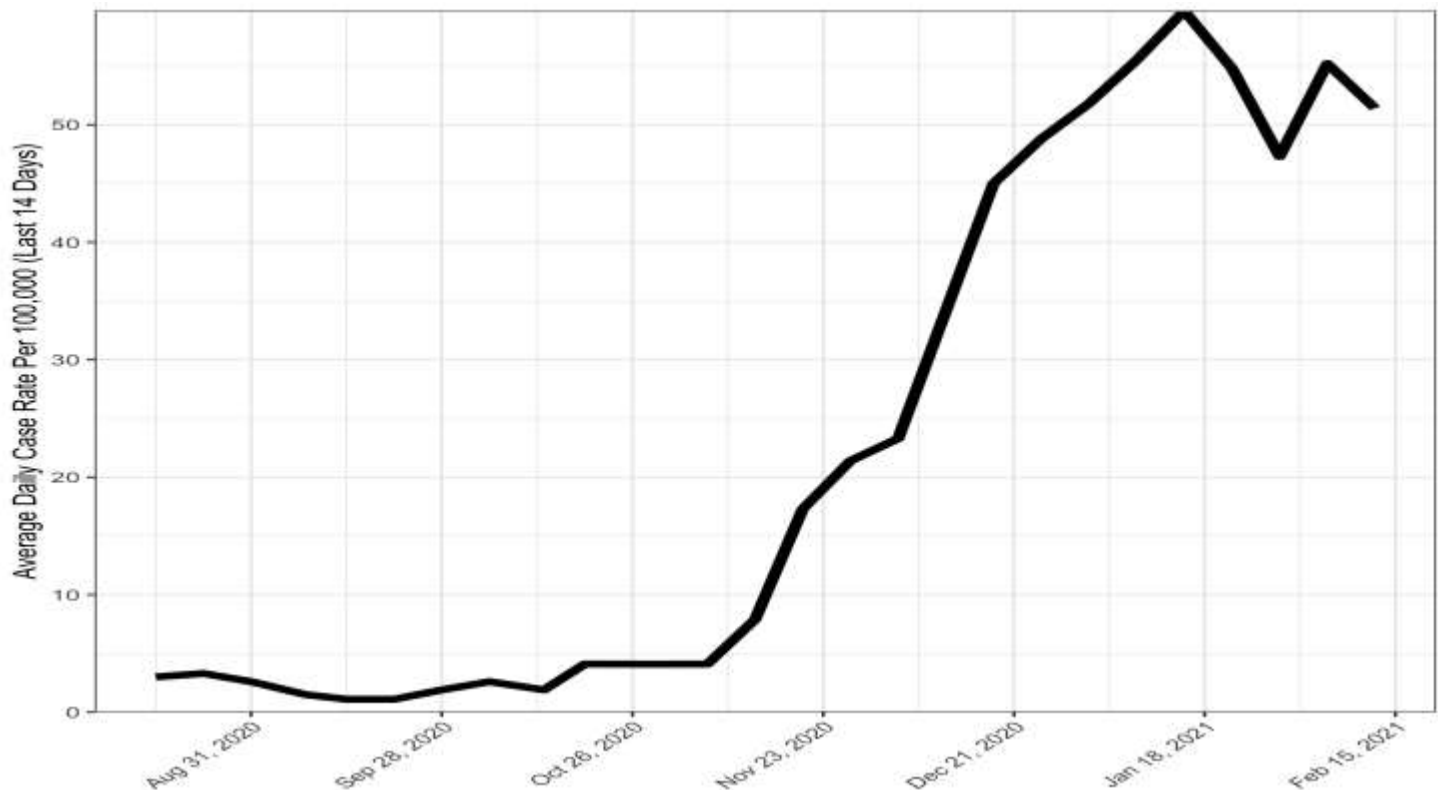
Active cases: **48**

Confirmed deaths: **31**

23 23 13 13 20 15 2 1  
0-19 years 20-29 years 30-39 years 40-49 years 50-59 years 60-69 years 70-79 years 80+  
Total Cases by Age Group from 1/29/2021-2/12/2021 (110)

Average Daily Incidence Rate per 100,000 (Last 14 Days)	Relative Change in Case Count	Total Tests	Total Tests (Last 14 Days)	Percent Positivity (Last 14 Days)	Change in Percent Positivity
51.4	Lower	36917	3932	4.02%	Lower

We are currently a **Yellow** Community per the Massachusetts Average Daily Incidence Rate per 100,000 Color Calculation





# TOWN OF MARBLEHEAD

## Board of Health

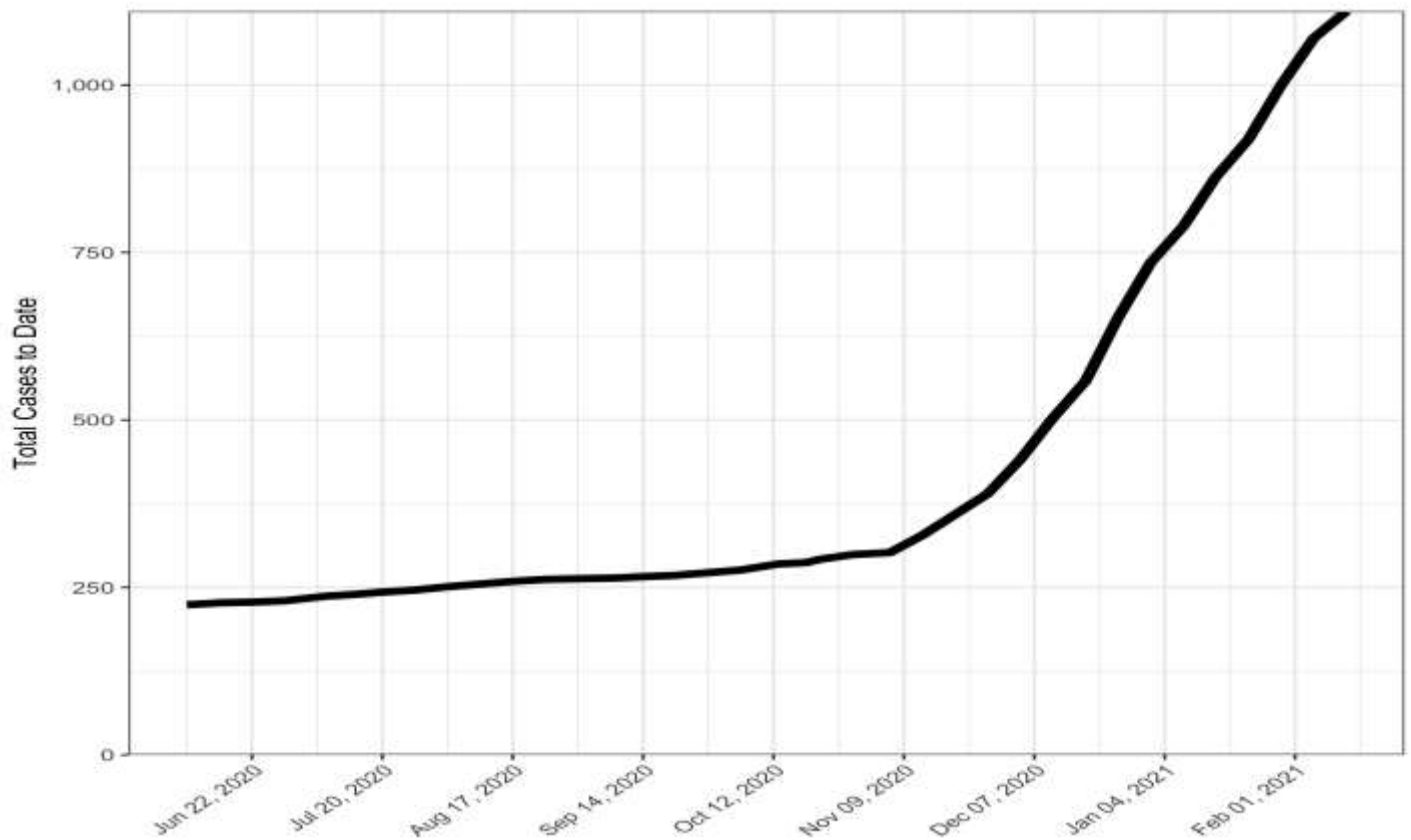
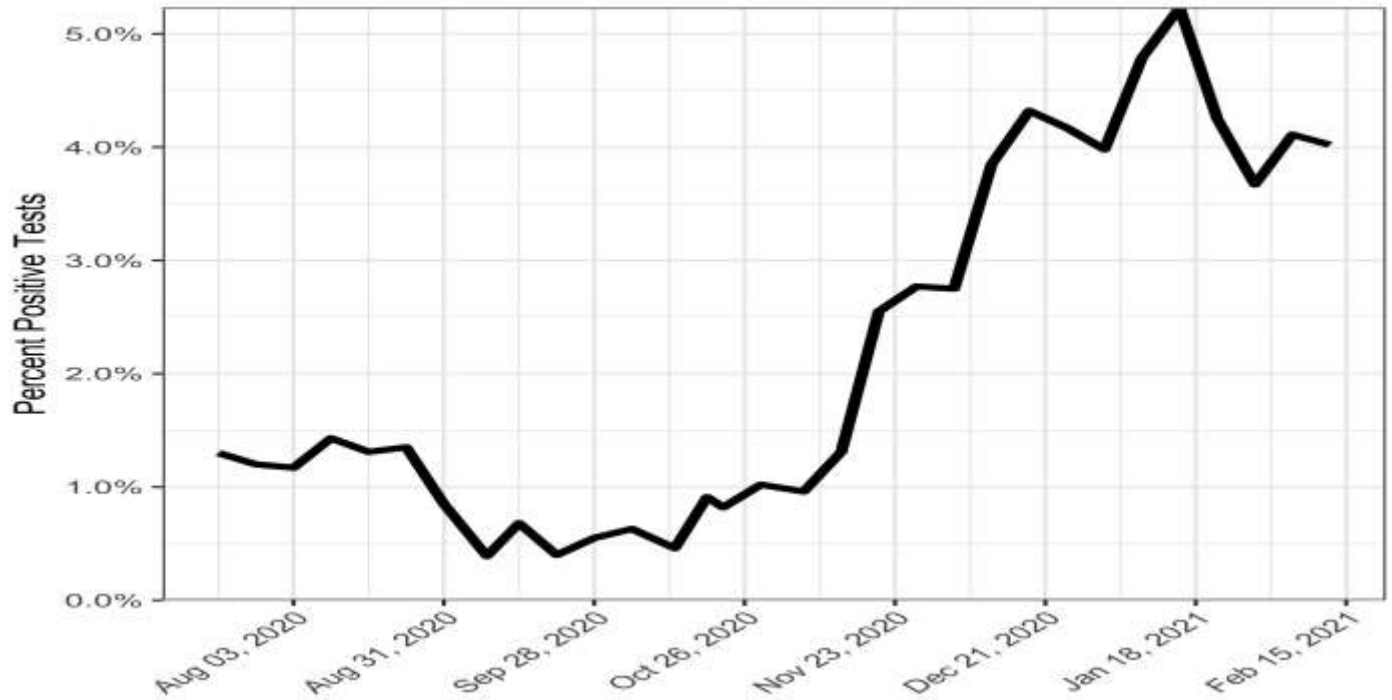
Todd Belfbecker, Chair  
Helaine R. Hazlett  
Michelle Gottlieb

(781) 631-0212

7 Widger Road

Marblehead, MA 01945

Andrew Petty, Director





# TOWN OF MARBLEHEAD

## Board of Health

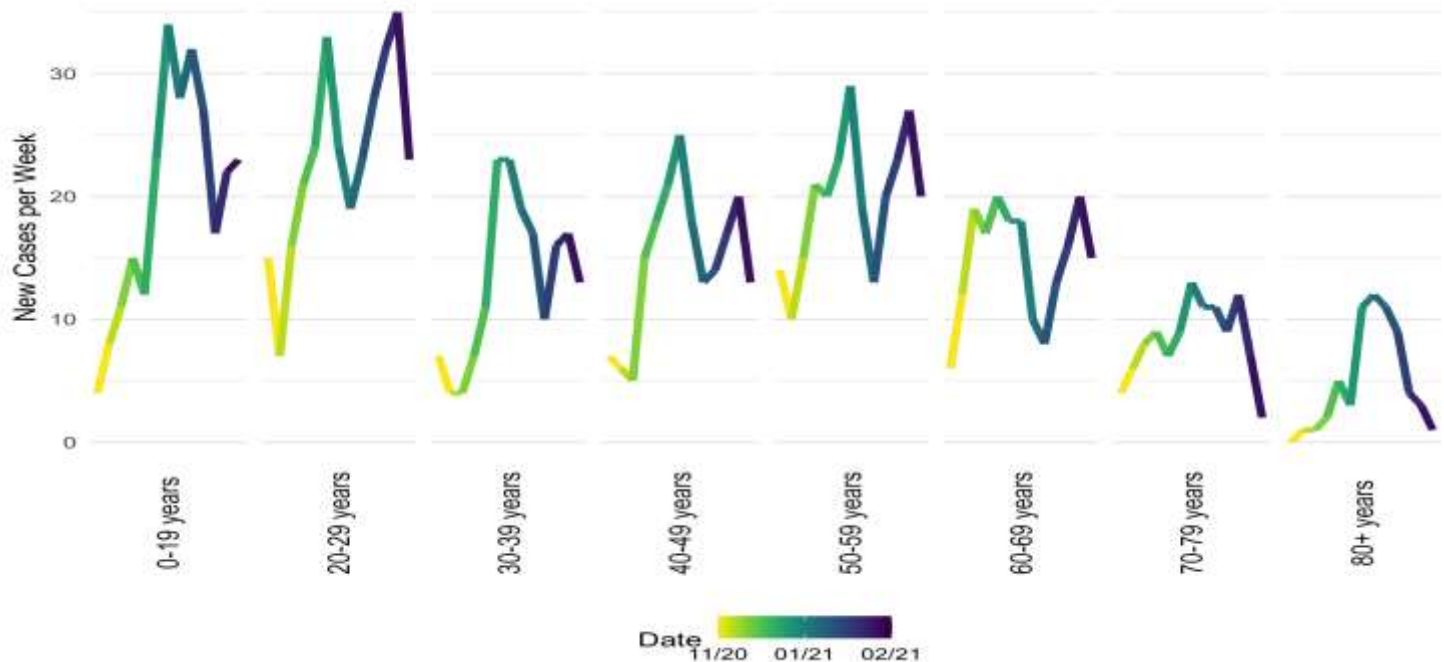
Todd Belf Becker, Chair  
Helaine R. Hazlett  
Michelle Gottlieb

(781) 631-0212

7 Widger Road

Marblehead, MA 01945

Andrew Petty, Director



Marblehead Health Department (MHD) data regarding case counts come directly from Massachusetts Department of Public Health (MDPH) and their surveillance system (MAVEN). We use the language and terminology per the Centers for Disease Control and Prevention (CDC) guidance, and ***recent guidance categorizes all confirmed or presumptive positive cases as positive.***

**Social gatherings are contributing to these increases. Transmission is occurring in homes as well as in the work place. 12.07% of the 1110 confirmed cases and 96.667% of the reported coronavirus-related death were either residents or staff members at one of Marblehead's long term care facility.**

**Please remember that all persons in Massachusetts over the age of 5 are required to wear a mask or face-coverings over their mouth and nose when in a public location, whether indoors and outdoors. Public locations include any place open to the public including, without limitation, grocery stores, pharmacies, and other retail stores; public transportation, taxis, livery, and other ride-sharing vehicles, public streets and ways, and any location that hosts indoor and outdoor events and performances. Masks or cloth face coverings are also required when in a carpool with non-household members'.**

**All visitors entering Massachusetts, including returning residents, who do not meet an exemption, are required to:**

- Complete the [Massachusetts Travel Form](#) prior to arrival
- Quarantine for 10 days or produce a negative COVID-19 test result that has been administered up to 72-hours prior to your arrival in Massachusetts. If not obtained before entry to Massachusetts, a test may be obtained after arrival. However, all such arriving travelers must immediately begin the 10-day quarantine until a negative test result has been received. Failure to comply may result in a **\$500 fine per day.**



# TOWN OF MARBLEHEAD

## Board of Health

Todd Belf Becker, Chair  
Helaine R. Hazlett  
Michelle Gottlieb

(781) 631-0212

7 Widger Road

Marblehead, MA 01945

Andrew Petty, Director



### Massachusetts Department of Public Health | COVID-19 Dashboard

#### Hospitalizations from COVID-19

Released on: February 10, 2021  
Data as of: February 9, 2021  
Caution: recent data may be incomplete

#### Navigation

Today's Overview

Overview Trends

COVID-19 Cases

COVID-19 Testing

**Hospitalization**

COVID-19 Deaths

Higher Ed & LTCF

Patient Breakdown

City and Town

Resources

Data Archive

#### Hospitalizations

There are **1,358** patients hospitalized for COVID-19.

#### ICU & Intubated Patients

There are **309** patients in Intensive Care Units (ICU) and **183** patients are intubated.

#### Average Age of Patients

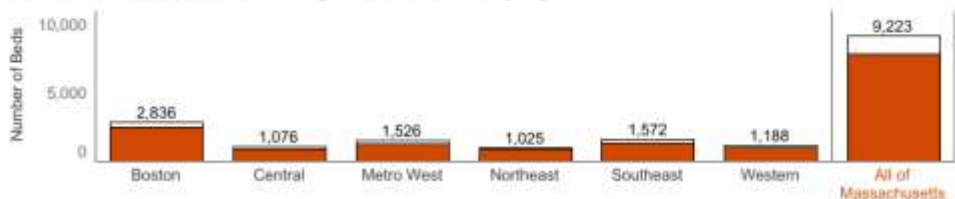
The average age of patients who were hospitalized for COVID-19 was **72** years old.

Select to switch hospital visualizations:

Hospitalization Detail

View availability by date  
2/9/2021

Available and **occupied** medical/surgical (not ICU) beds by region



Available and **occupied** ICU beds by region



For purposes of this reporting, "confirmed" are cases with a PCR test. All data included in this dashboard are preliminary and subject to change. Created by the Massachusetts Department of Public Health, Bureau of Infectious Disease and Laboratory Sciences, Office of Integrated Surveillance and Informatics Services.

- People over the age of 65 and people who have underlying health conditions – who are at high risk for COVID-19 – should continue to stay home except for essential errands such as going to the grocery store and to attend to healthcare needs
- All residents are advised to leave home only for healthcare, worship and permitted work, shopping, and activities
- When going to the pharmacy ask if you can fill your prescriptions for 90 days if possible; for some medications this is not allowed. If you are at high-risk, try to use a mail-order service
- All residents are **REQUIRED** to wear face masks or cloth face coverings in all public places, whether indoors or outdoors, even where they are able to maintain 6 feet of distance from others.
- Parents should limit play dates for children
- All residents are advised to wash their hands frequently for at least 20 seconds with soapy water
- All residents are advised to be vigilant, monitor for symptoms and stay home if you feel sick
- Use remote modes of communication like phone or video chat instead of visiting friends or family who are high risk for COVID-19



# TOWN OF MARBLEHEAD

## Board of Health

Todd Belf Becker, Chair  
Helaine R. Hazlett  
Michelle Gottlieb

(781) 631-0212

7 Widger Road

Marblehead, MA 01945

Andrew Petty, Director

### Temporary capacity and gathering limits

The following capacity limits are effective as of at 5:00 am on Monday, February 8, 2021. Please see sector-specific protocols for further details.

### Current Limits

All businesses in the list below, that were limited to 25% capacity, have returned to 40% capacity, as previously allowed in industry guidance effective in December 2020. Additionally, **restaurants** and **close contact personal services** will now be allowed to operate at a 40% capacity limit.

- Arcades and Recreational Businesses
- Driving and Flight Schools
- Gyms/Health Clubs
- Libraries
- Museums
- Retail
- Offices
- Places of Worship
- Lodging (common areas)
- Golf (indoor areas)
- Movie theaters (no more than 50 people per theater)
- Restaurants will now be limited to 40% of their seated capacity; employees will not count toward the limit
- Close Contact Personal Services will now be limited to 40% capacity; employees will not count toward the limit
  - A limit of 5 people per 1000 sq. feet applies for smaller businesses without an available fire occupancy capacity
- There continues to be no % capacity limits on manufacturing, construction, and laboratories.

The host of an indoor event at private residences, event venues, and in public setting must limit the number of attendees at all times to:

- No more than 10 persons

The host of an outdoor event at private residences, event venues, and in public settings must limit the number of attendees at all times to:

- No More than 25 persons



# TOWN OF MARBLEHEAD

## Board of Health

Todd Belf Becker, Chair  
Helaine R. Hazlett  
Michelle Gottlieb

(781) 631-0212

7 Widger Road

Marblehead, MA 01945

Andrew Petty, Director

### **Vaccine distribution in MA will occur in a phased approach:**

As of Monday night February 8th, 910,412 doses have been administered to residents and over 1.2 million have been shipped to the Commonwealth. We are picking up the pace and are on track to have over one million people vaccinated soon. Over 70% of total doses shipped to Massachusetts have been reported into the state's database as administered.

### **Vaccine Capacity Update / New Sites Announcement:**

The State is continuing to add appointments at vaccination sites statewide. Thursday February 11 at 8:30AM: 53,000 new appointments at mass vaccination sites were posted online at mass vaccination sites at the Eastfield Mall in Springfield, Gillette Stadium, and Fenway Park.

Over the course of this week, over 50,000 pharmacy appointments had been added on a regular/daily basis and another 14,000 appointments will be added at 35 community health centers across the state. Other provider sites, like health care providers and local vaccine clinics, added almost 40,000 appointments over the course of this week.

All appointments can be scheduled online by visiting [Mass.Gov/COVIDVaccine](https://Mass.Gov/COVIDVaccine). Or, residents 75 and older can call 2-1-1 to get help booking an appointment if they're unable to use the website.

Massachusetts is continuing to add capacity through mass vaccination sites—which are high output locations where vaccines can be administered quickly and efficiently. Two new mass vaccination sites will open later this month: one in Natick at the Natick Mall on February 22, and the other in Dartmouth at Circuit City, on February 24<sup>th</sup>.

Both sites will be open to all eligible residents and will start with about 500 doses a day, scaling up at the Dartmouth site to about 2,000 doses per day, and the Natick site will scale up to about 3,000 doses.

Appointments for both new sites will be available to book on Mass.Gov beginning next Thursday, February 18.

### **75+ Caregiver Eligibility**

On February 1<sup>st</sup> we started vaccines for residents 75 and older. These residents have been getting shots for the last 10 days, and during that time we have learned that some people might be hesitant to go to a mass vaccination location without a relative or a caregiver.

**This policy goes into effect on Thursday, February 11<sup>th</sup>. It is not applicable for appointments that have already been booked.**

To support more 75 and older residents getting to a mass vac site, we are announcing a new policy to allow one caregiver to join a 75-plus resident and also schedule their own appointment for a vaccine at the same time. Any caregiver is eligible to receive the vaccine at the same time as the 75 and older resident, provided they have an appointment.

While this policy change applies specifically to the mass vaccination locations, LBOH-run clinics may choose to also allow for this. Information about eligibility will need to be changed by the LBOH in the clinic descriptions and information should be shared with your COAs and others for consistent messaging.

Caregivers will be required to self-attest that they are accompanying a 75-plus resident who could not otherwise get to or navigate the vaccination site when they fill out the attestation form (including the attestation form in PrepMod).

Appointments for 75-plus residents and their caregivers should be scheduled for the same day, as close together as possible. If both the caregiver and 75-plus resident are unable to use or have difficulty accessing the internet, they may call 2-1-1 for assistance booking both appointments.



# TOWN OF MARBLEHEAD

## Board of Health

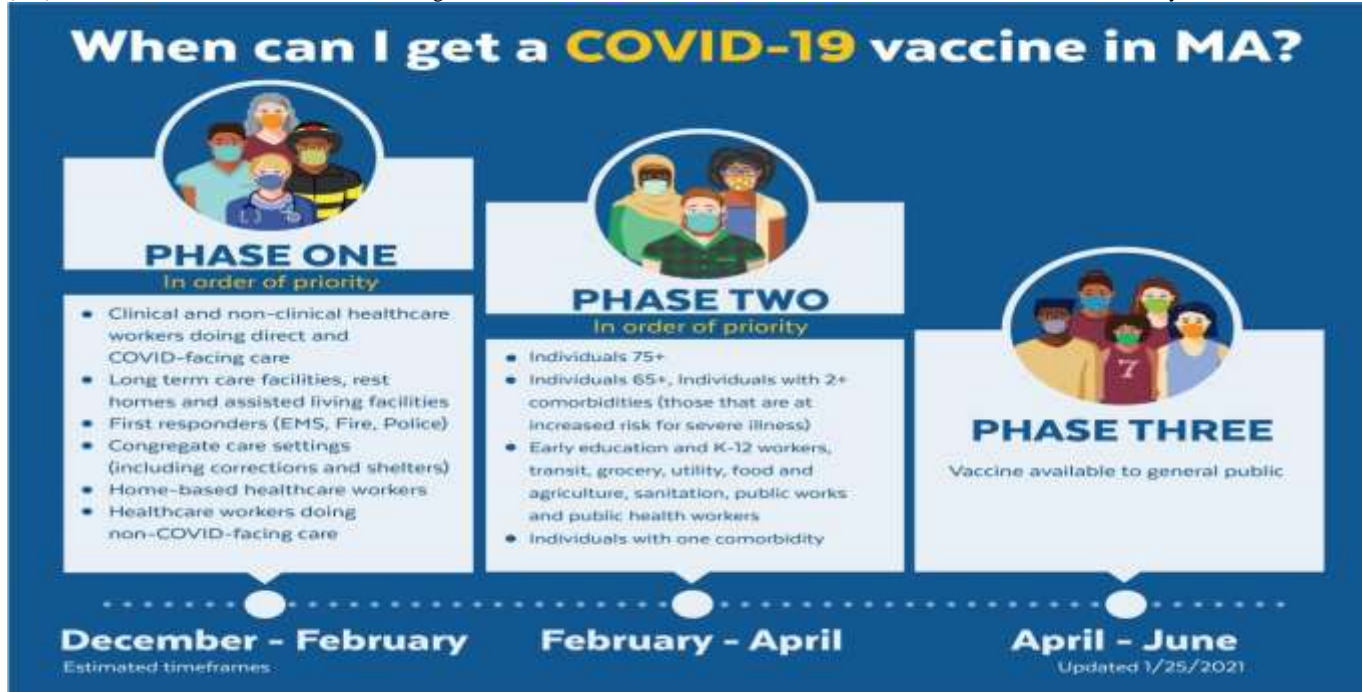
Todd Belf Becker, Chair  
Helaine R. Hazlett  
Michelle Gottlieb

(781) 631-0212

7 Widger Road

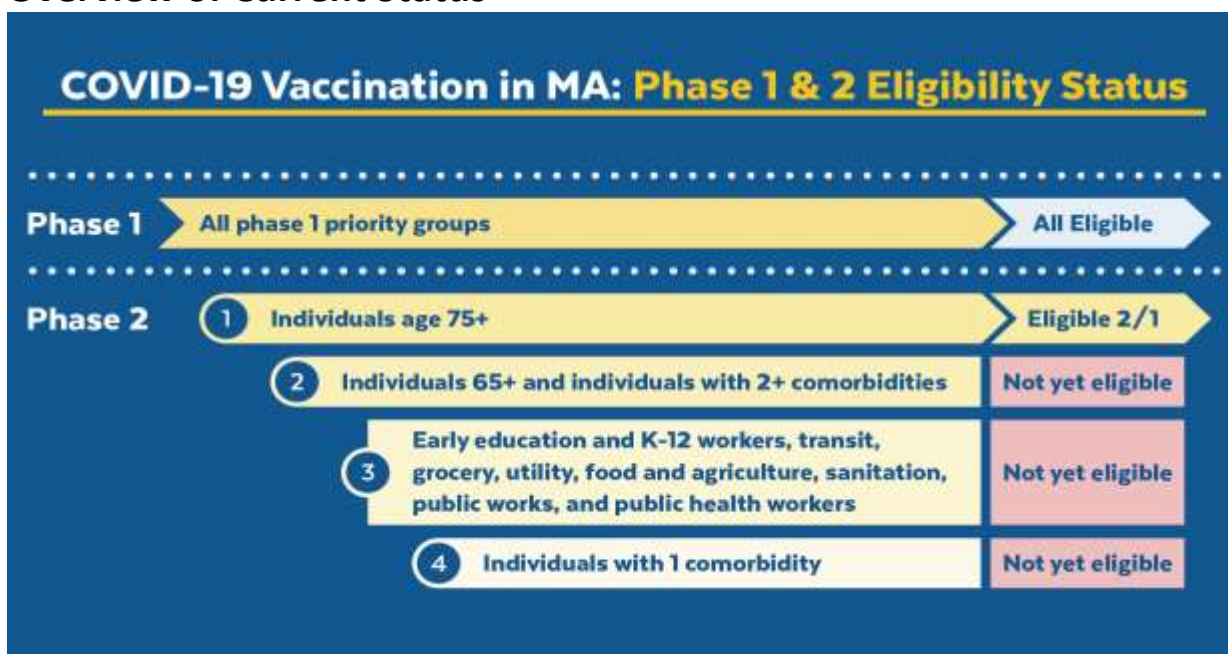
Marblehead, MA 01945

Andrew Petty, Director



This list will be updated Tuesdays and Thursdays by 5pm in response to questions submitted via [COVID-19-Vaccine-Plan-MA@mass.gov](mailto:COVID-19-Vaccine-Plan-MA@mass.gov)

## Overview of Current Status





# TOWN OF MARBLEHEAD

## Board of Health

Todd Belfbecker, Chair  
Helaine R. Hazlett  
Michelle Gottlieb

(781) 631-0212

7 Widger Road

Marblehead, MA 01945

Andrew Petty, Director

### COVID-19 Vaccine Updates

- **NEW** Residents and staff of low-income and affordable **senior housing** added to first priority in Phase 2
- **NEW** COVID-19 Vaccine Locations for Health Care Workers <https://www.mass.gov/info-details/covid-19-vaccine-locations-for-health-care-workers>
- **NEW** COVID-19 Vaccinations for Congregate Care Settings <https://www.mass.gov/info-details/covid-19-vaccinations-for-congregate-care-settings>
  - Vanity URL: [Mass.gov/congregatecarevaccine](https://www.mass.gov/congregatecarevaccine)
- **NEW** COVID-19 Vaccinations for Senior Housing Settings <https://www.mass.gov/info-details/covid-19-vaccinations-for-senior-housing-settings>
- **NEW** COVID-19 vaccine locations for individuals currently eligible to be vaccinated <https://www.mass.gov/info-details/covid-19-vaccine-locations-for-individuals-currently-eligible-to-be-vaccinated>
- When can I get the COVID-19 Vaccine? <https://www.mass.gov/info-details/when-can-i-get-the-covid-19-vaccine>
- COVID-19 Vaccine Distribution Phases (timing by group) <https://www.mass.gov/info-details/when-can-i-get-the-covid-19-vaccine#overview-and-current-status>
- Stop COVID-19 Vaccine Graphics (includes first responders, general, and vaccine timeline graphics): <https://www.mass.gov/info-details/stop-covid-19-vaccine-graphics>
- Email Address to send vaccine questions: [covid-19-vaccine-plan-ma@mass.gov](mailto:covid-19-vaccine-plan-ma@mass.gov)
- Guidance for health workers who have been vaccinated <https://www.mass.gov/info-details/massachusetts-covid-19-vaccine-program-mcvc-guidance-for-vaccine-providers-and>

### Marblehead Residents Vaccinated for COVID-19 as of February 8, 2021

**First Dose 1513**

**Second Dose 497**



# TOWN OF MARBLEHEAD

## Board of Health

Todd Belf Becker, Chair  
Helaine R. Hazlett  
Michelle Gottlieb

(781) 631-0212

7 Widger Road

Marblehead, MA 01945

Andrew Petty, Director

**Additional Information can be found at the following links**

**Daily Dashboard Mass.gov**

[www.mass.gov/info-details/covid-19-response-reporting#covid-19-daily-dashboard-](http://www.mass.gov/info-details/covid-19-response-reporting#covid-19-daily-dashboard-)

**COVID-19 Weekly health Report**

[www.mass.gov/info-details/covid-19-response-reporting#covid-19-weekly-public-health-report-](http://www.mass.gov/info-details/covid-19-response-reporting#covid-19-weekly-public-health-report-)

**Positive COVID cases in Schools**

[www.doe.mass.edu/covid19/positive-cases/](http://www.doe.mass.edu/covid19/positive-cases/)

**Resources & hotlines**

- **Create a profile and sign-up for COVID-19 alerts** by text, email, or phone call in your preferred language.
- **Call 2-1-1** or use **live chat** for non-emergency questions and help
- **Call Crisis Counseling Assistance Program** | (888) 215-4920
- **Email** the Governor's Office or call (617) 725-4005

**Abuse & assault**

- **Domestic violence and sexual assault:**
  - **Massachusetts** | **Call SafeLink** at (877) 785-2020 or access **SafeLink live chat**. For deaf and hard-of-hearing call (877) 785-2020, or by TTY at (877) 521-2601
  - **Download SafeLink flyers** to post on the wall or use in Social Media.
  - **National** | **Call Domestic Violence 24/7 Crisis Hotline** at (800) 799-7233
  - **National** | **Call Sexual Assault 24/7 Crisis Hotline** at (800) 656-4673
- **Child abuse or endangerment:**
  - **Mon - Fri, 8:45 a.m. - 5:00 p.m.** | **Find and call your local DCF office**
  - **Sun - Sat, 5:00 p.m. - 8:45 a.m.** | **Call Child-At-Risk hotline** at (800) 792-5200

**Nursing homes**

- **Call Nursing Home Family Resource** line at (617) 660-5399

If you or a family member are experiencing a mental health or substance use disorder crisis, the Emergency Services Program/Mobile Crisis Intervention (ESP/MCI) is available 24 hours a day, 7 days a week, 365 days a year. Anyone may contact ESP/MCI for assistance. Call toll-free at 1 (877) 382-1609

**Weekly Case report will come out on Friday morning after 9am**