A wide-angle photograph of Marblehead Harbor under a clear blue sky. The water is a deep blue, and the far shore is lined with houses and trees. In the foreground, a rocky beach with small, smooth stones is visible, along with a wooden pier structure on the right.

Marblehead Harbor Plan

Steering Committee #4: Public Charrette

May 16, 2022

Town of Marblehead | Innes Associates | Tighe & Bond

AGENDA

- **WELCOME AND INTRODUCTIONS**
- **PRESENTATION: PLANNING FOR MARBLEHEAD HARBOR**
- **BREAKOUT SESSIONS: VISIONING AND MAPPING**
- **REPORT BACK AND DISCUSSION**
- **NEXT STEPS**

PLANNING FOR MARBLEHEAD HARBOR

Community goals, objectives, and recommendations for public and private use of the land and water of its harbor areas and establishes an implementation program to achieve the desired outcomes.

- **Fishing, boating, and related industries.**
- **Public access to and enjoyment of the waterfront.**
- **Prevent displacement of commercial fishing activities.**
- **Increase ADA-compliant access.**

PLANNING FOR MARBLEHEAD HARBOR

Incorporate recent planning efforts.

- **Coastal Resilience Project - Part 2 (Ongoing)**
- **Collins Engineers, Inc., State Street Landing Seawall and Piers, October 6, 2020.**
- **Woods Hole Group, The Future of Marblehead Harbor, August 2020 (Coastal Resilience Project - Part 1)**
- **Woods Hole Group, Marblehead Harbor Municipal Structure Visual Assessment Report, June 2020**
- **Town of Marblehead: Community Resilience Building Workshops, Summary of Finding, June 2018**

PROCESS TIMELINE



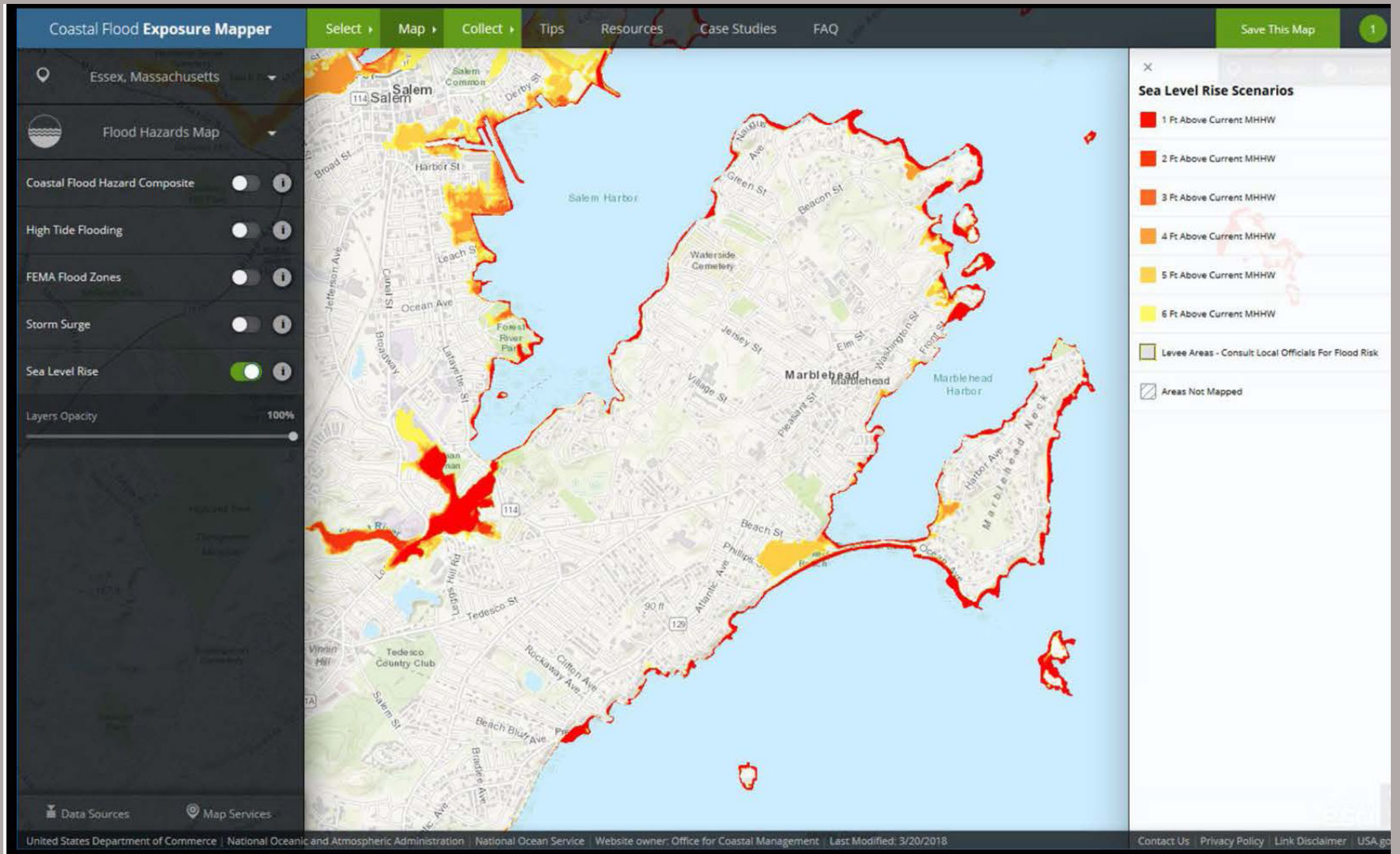
LAND USE



FEMA: COASTAL 100-YEAR FLOOD ZONE

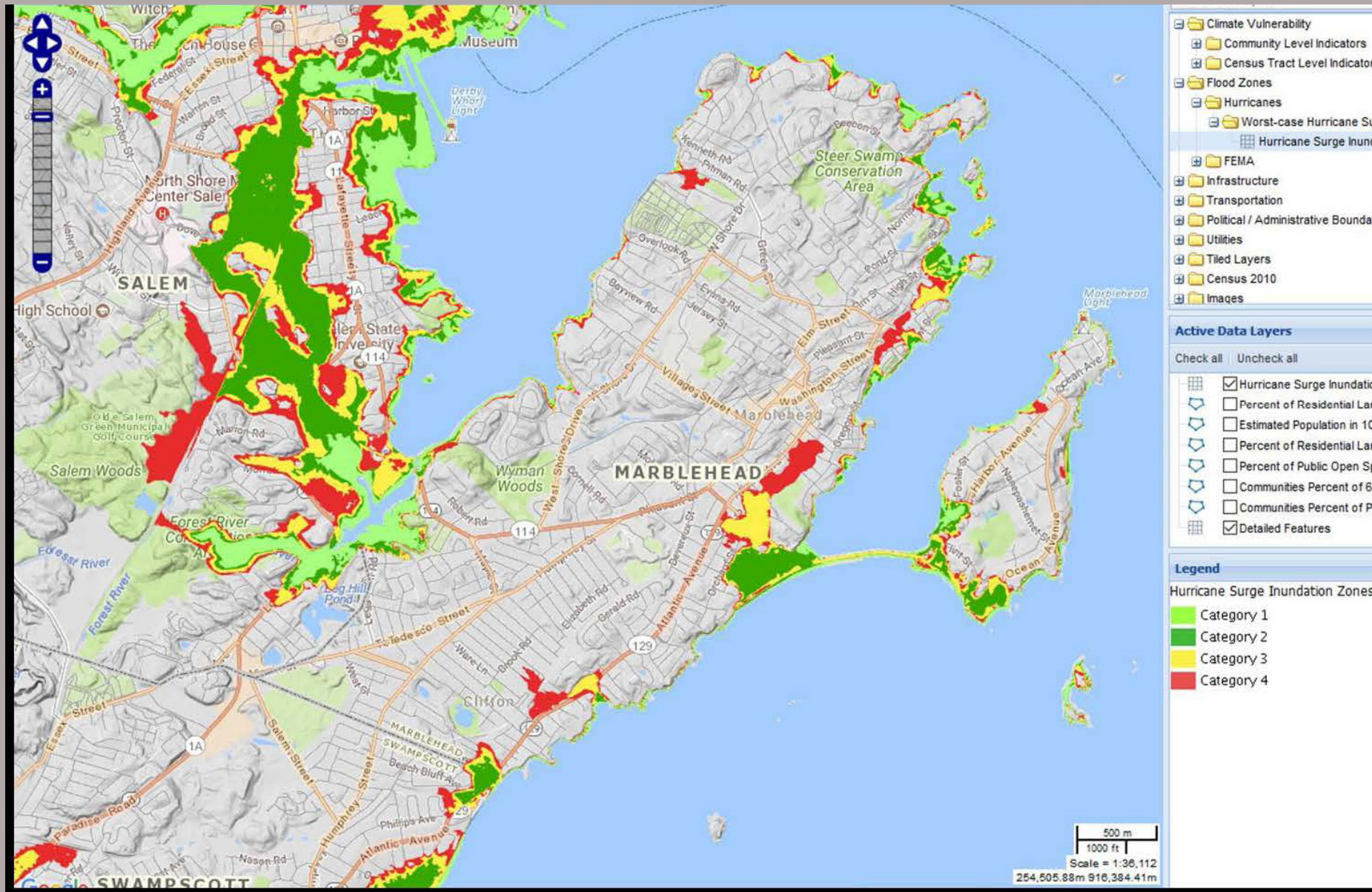


MUNICIPAL VULNERABILITY PLAN: SEA LEVEL RISE



Town of Marblehead: Community Resilience Building Workshops, Summary of Finding, June 2018

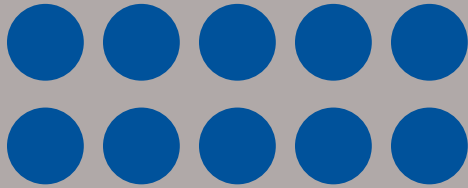
MUNICIPAL VULNERABILITY PLAN: STORM SURGE



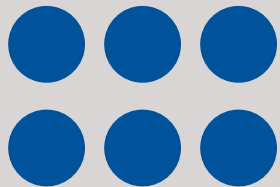
Town of Marblehead: Community Resilience Building Workshops, Summary of Finding, June 2018

WHAT WE'VE LEARNED SO FAR

STAKEHOLDER/STAFF CHARRETTE: REVIEW OF 2009 HARBOR PLAN



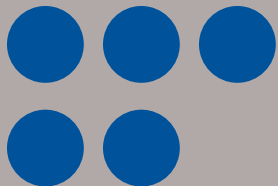
Breakwater



Support commercial fishing.



Support/implement EPA Stormwater Regulations and DEP and Marblehead Conservation Commission Regulations and Guidelines regarding stormwater management and erosion control mitigation.



Prepare a long-term capital improvement and maintenance plan for municipal waterfront property and facilities. **Explicitly include ADA compliance.**

Dredge Little Harbor.

WHAT WE'VE LEARNED SO FAR

STAKEHOLDER/STAFF CHARRETTE: REVIEW OF 2009 HARBOR PLAN



Consider an isolated pumpout dock facility in the proximity of the Harbormaster's Dock to facilitation vessel septage discharges, Support efforts to educate the boating public by developing a brochure that explains the location, schedule, rules and benefits associated with the pumpout facilities. **Note that this exists, which suggests the need for more education.**

Rehabilitate the seawalls and piers at State Street North and State Street South.

WHAT WE'VE LEARNED SO FAR

STAKEHOLDER/STAFF CHARRETTE: REVIEW OF 2009 HARBOR PLAN



Coordinate with the Town's Planning Department to establish the notion of a 'Harbor Walk' to maximize pedestrian access to the waterfront, with linkage to the existing Public Access points.

Consider the installation of smaller floating docks adjacent to existing facilities to support canoe and kayak water access. **Include small boat dinghies and stand-up paddleboards.**

Initiate the repair and improvement of the Public Launching Ramp at Barnegat Landing. The dredging of Little Harbor project should be resurrected with high priority and the existing ramp should be re-constructed so as to provide safe water access at all tides. **The ramp repair is out to bid.**

WHAT WE'VE LEARNED SO FAR

STAKEHOLDER/STAFF CHARRETTE: REVIEW OF 2009 HARBOR PLAN



Secure federal, state and private funds for capital improvements of municipal waterfront property and facilities.

Conduct site suitability analyses to identify additional launching facilities.

Increase launching ramp capacity.

Protect the natural and manmade elements of the harbors and waterfront that contribute to the scenic, historical, and aesthetic qualities/sense of place.

Identify/prioritize areas/parcels appropriate for future expansion to facilitate continuity along the shoreline.

Small boat rentals.

WHAT WE'VE LEARNED SO FAR

STAKEHOLDER/STAFF CHARRETTE: NEW IDEAS

Promote clean clubs, green boating, and clean regattas.

Address ADA deficiencies.

Promote boating education/safety classes including support for private education.

Incorporate the Municipal Vulnerability Plan and the Climate Adaptation Studies into the plan.

Add kayak rentals and access to fresh water at Riverhead Beach.

Add a public launch service and public dinghy access.

Add electric boat charging facilities.

FILL-IN-THE-BLANKS

Fill-in-the Blanks

I _____ Marblehead Harbor!



One thing that I don't like about Marblehead Harbor is _____.



When I have visitors, I take them to _____ in the Harbor.



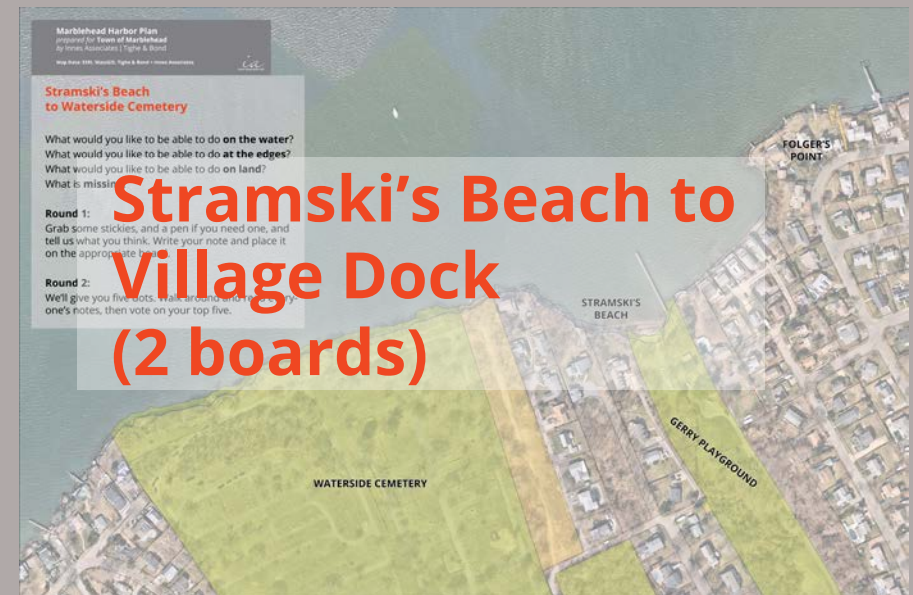
When I think about Marblehead Harbor now, the first word that comes to mind is _____.

When I think about the future of Marblehead Harbor, my biggest hope is _____ and my biggest concern is _____.

HOPE

CONCERN

MAPS



YOUR TURN!

Four boards; four areas.

Think about the following:

What would you like to be able to do **on the water**?

What would you like to be able to do **at the edges**?

What would you like to be able to do **on land**?

What is **missing**?

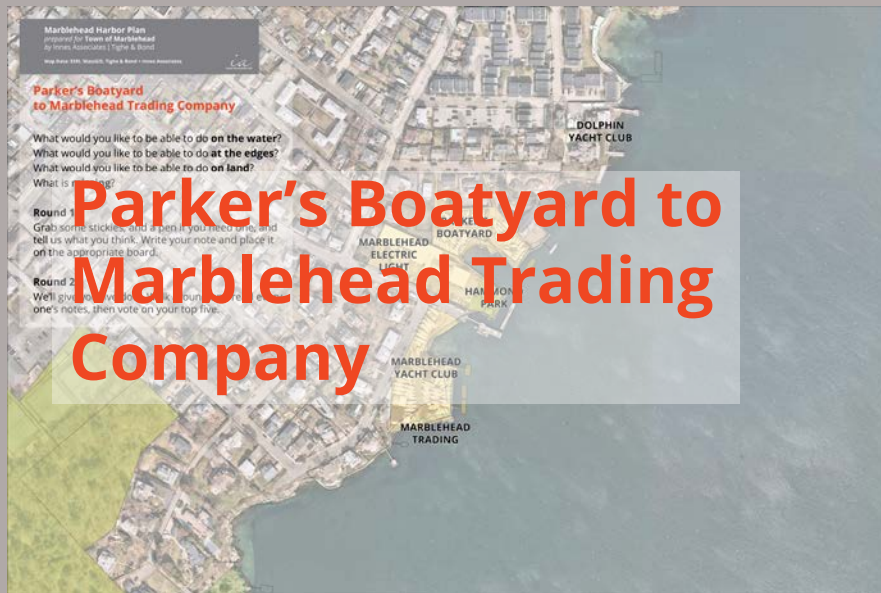
Round 1:

Grab some stickies, and a pen if you need one, and tell us what you think. Write your comment and place it on the appropriate board.

Round 2:

We'll give you five dots. Walk around and read everyone's notes, then vote on your top five.

REPORT BACK



SURVEY!!

**[https://www.surveymonkey.com/r/
MHD-Harbor](https://www.surveymonkey.com/r/MHD-Harbor)**



NEXT STEPS

Survey is open until July 15.

**Complete existing conditions in July
(this includes interviews and allows
site visits during the beginning of the
boating season).**

**Draft plan and recommendations in
August: review by Harbor Committee.**

Public review in September.

